



# STRETEWISE

The Village Magazine

**Price £1**

**February-March 2020**

**Vol 29:01**

Published with support from the Captain Pearson Memorial Trust, individual donations, advertisers and our readers.

Printed by:  
Parish Magazine Printers EX22 6TD

[www.stretewise.co.uk](http://www.stretewise.co.uk)

email: [stretewise@outlook.com](mailto:stretewise@outlook.com)

# Directory

BASH	Ali Denham	01548 854 474
Devon County Councillor	Julian Brazil	01548 511 109
District Councillor	Richard Foss	01548 511 234
Doctors (Chillington)	Chillington Health Centre	01548 580 214
Doctors (Dartmouth)		01803 832 212
Highways	Devon County Council	0845 155 1004
The Kings Arms		01803 770027
Parish Council Chairman	Kate Gill	
Parish Council Clerk	Helen Darch	01803 770 018
Parish Hall Committee Chair	Martin Sobey	01803 770 127
Parish Hall Bookings	Andrea Phillips	01803 770 786
Probus	Graham Lewis	01803 712 248
RSPCA		01803 859 695
Short Mat Bowls Secretary	Bryan Seymour	01803 770 287
Strete Social Club	Dorothy Teal	01803 770 982
	Judy Bedggood	01803 770 063
South West Water	Report Leaks	0800 230 0561
St John the Baptist Church	Fr Sunny Paul	01803 853 406
St Michaels Church	Revd. Alison Shaw	01803 770 868
Strete Chapel	Derek & Gill Harris - Tony & Jan Atkins	01803 770 256
	Tony & Jan Atkins	01548 580 227
Stretewise Editor	Dave Jones	01803 770 059
Totnes Ring and Ride		01803 867 878
Tree Warden	Ian Cumberlidge	01803 770 020

## Local Emergency Services

Emergency Fire, Ambulance, Police and Coastguard 999 or 112  
Non-emergency contact with emergency services 101

NHS Direct 0845 4647

Torbay Hospital 01803 614 567 Derriford Hospital 01752 212 082

Totnes Hospital 01803 862 622 Kingsbridge 01546 852 349

**Strete Post Office and Stores** 01803 770 225

Opening Times: Monday-Friday 7.30am to 5.00pm,  
Saturday 7.30am to 1.00pm, Sunday 8.00am to 12.00pm

**Stoke Fleming Library Village Hall** John Lewis 01803 770 075

Monday 3.00pm to 5.00pm, Tuesday 10.30pm to 12.30pm,  
Thursday 3.00pm to 5.00pm. Or 24 hours at [devon.gov.uk/libraries](http://devon.gov.uk/libraries)



## The Editorial

A new year and so far a mild winter although very wet and windy. The grass is still growing and some flowers are making an early appearance Snow Drops, Aubrieta, Periwinkles and Cyclamen. Although we still have time for some harsh weather before winters end.

Thank you to the subscribers who have paid for their 2020 Stretewise issues, your support will help pay for printing costs and keep the magazine viable.

2020 will see a new management team in The Kings Arms. A big thank you to Mark and Kat for getting The Kings Arms up and running again. The new management team will be taking over after a sort closer in February for upgrading and renovation work.

Malcolm Hollis gives a us wonderful account of his first flying experience as a boy. Judging from the flight record of this plane we are lucky to still have him with us.

There is full itinerary of schedule walks on Mondays and Thursdays from the Dartmouth 'Walk and Talk' through to the end of March. The Probus Club of Stoke Fleming & District have organised a very full and varied calendar of talks held at the Stoke Lodge Hotel.

Strete Village Day 2020 planning meeting has been arranged Wednesday 4th March at 7pm.

Please be aware that due to our regular printer changing his schedules the deadline for the magazine will now be the 23rd of the month not 25th.

## Stretewise

### Photographic Competition 2020

The theme for the Stretewise 2020 photographic competition will be 'Of Land And Sea' (portrait or landscape)

The closing date for all entries will be midnight 25th July.



The first, second and third prize will be announced and prizes awarded at the 2020 Strete Village Day.

Entries should be high

resolution image files that can be emailed to:

stretewise@outlook.com or high quality prints posted to 27 Start Bay Park, Strete, TQ6 0RY. Please include your full contact details with all entries.

The winning entry will be used on the front cover of the October/November Stretewise magazine.

Rule 1. There is no age limit.

Rule 2. Maximum number of entries per person – Four.

Rule 3. The Competition is free to enter.

Rule 4. This Competition is open to all members of the public who have visited, or have a connection with the Parish of Strete and surrounding district.

Rule 5. Entries must be submitted by midnight on 25th July 2020.

Rule 6. To enter please email your image to [stretewise@outlook.com](mailto:stretewise@outlook.com), or deliver prints to the editor Stretewise Strete Devon TQ6 0RY.

Rule 7. Prints should be no smaller than postcard size, Digital Images should be no smaller than 800KB no larger than 5MB. Image format JPEG or TIFF files.

## From the Rectory

Dear Friends,

Firstly, a big thank you all for your generous support to our local food banks. You really have made a difference to local, struggling families. The variety of gifts you gave were greatly appreciated.

I hope you all had a joy filled Christmas and that 2020 is beginning positively for everyone.

I recently had the amazing experience of a few days in America and Christmas came early in New York City, straight after Thanksgiving.

By the first few days of Dec, huge trees are lit, twinkling lights make garlands round trees and water hydrants, city ice rinks are constructed, shop windows are decorated with ornate and multi tech displays, The Salvation Army sing carols on street corners and shoppers converge on Maceys, Bloomingdales and Saks.

This year snow came early too and went as quickly, leaving bitterly cold winds blowing between the skyscrapers. But forewarned and wrapped up warmly. I ventured out, exploring 5th and 6th Avenue and all the intersections.

One day I ventured on the train, south to the World Trade Centre, to the Oculus, to the 9/11



museum, the memorial pools and the Chapel that miraculously survived amidst the devastation. Very moving. My guide was just 6 when the twin towers were attacked, living in the Bronx, and has clear memories of his school closing and his mother struggling to reach him as all roads and transport links were closed. His father was a First Responder and spent much of the days and weeks ahead attempting to , first, find survivors , and as time went on, collecting buckets of rubble and other materials. Ryan, my guide told me that 'Thank God, my father is living still - and is well' I looked puzzled and he explained - Many more of those heroic F R 's are not- dying as the towers continued to collapse during rescue attempts - or who later succumbed to asbestosis or similar. New York is still haunted by the tragic events of that morning and remembrances are everywhere.

Christmas in the Church actually continues until Candlemas (February 2nd) so we leave our cribs decorated until then.



And then - in a whoosh, it's Lent, when Christians prepare for the solemnity of Holy Week; Maundy Thursday and Good Friday when Jesus was crucified and then the glorious celebration of Easter Day and Christ's Resurrection.

So, we can use the weeks of Lent to get ready and what better way than a short Lent course.

So, you are warmly invited to Stoke Fleming Village Hall on Tuesdays 3rd, 17th and 31st March from 7.30-9pm in the Ron Harris Room.

The subject will be 'Where Jesus walks' and we'll be looking at the Holy Land of Jesus's life and now.

I'll leave you with a prayer by Ruth Burgess.

Lord Jesus,	If we have grown comfortable,
Desert dweller,	Cushioning our living
Help us now,	with satisfaction and success,
In this time of Lent,	expose us to the challenge
to accompany you.	of your life.

If we have grown soft,	As we walk,
cushioning our lives	God, be our way.
With excuses,	As we learn,
Expose us to the toughness	God, be our truth.
of your way.	As we grow,
	God, be our life.

If we have grown lazy,	
Cushioning our minds	Amen.
with easy, thin thoughts,	Rev'd Alison
expose us to the rigour	
Of your truth.	

## St. Michael's Church

Totnes Road Strete Dartmouth **The Vicar is Revd. Alison Shaw.**

*The PCC consists of:* Church Wardens: Sally Green 01803 712 438 Brenda Range

Roy Kendall (Treasurer) Sally Green (Acting Secretary)

Sheila Kingsley Smith (Safeguarding Officer) Dorothy Teal, Joan Kendall.

# Strete Chapel Notes

## Greetings from the Strete Chapel Fellowship.

Our Evangelical chapel is next to the Village shop and has been used by us for worship since the 1960s. Before then it was an active Methodist Chapel and has been used in the village as a meeting place for Christians since the 1820s. The local congregation is augmented by holidaymakers, many of whom are regulars.

The Chapel hosts a good mix of speakers during the year who visit to preach and offer communion. We extend to you all a very warm welcome to come and join us in fellowship on all of these occasions. The time of our Morning Family Services is normally 11.00 am.

There is also a bible study on Wednesday afternoons and if you are interested please contact Derek on 770256.

### Breakfast for men at the Parish Hall

We offer a warm welcome to all men to join a breakfast for men being held from 8.30 to 9.30 on Saturday 8<sup>th</sup> February at the Hall. There is no charge and it is an opportunity for men in the area to meet together and share their stories. If you would like more information please ring Derek on 770018.

### Children's club Thursday evenings

We also run a children's club at the Chapel on Thursday evenings from 6.30 which is attended by children from the village and their friends.

every Thursday from 6.30-7.30pm

Why not join us at Strete Chapel for...

# Young Searchers

**Crafts**

**Stories from the Bible**

**Sing songs**

**Quizzes**

**Play games**

**and lots of FUN!**

We have a Family Service every Sunday morning at 11am. On the first Sunday in the month the service is followed by lunch. Everyone welcome! If you would like to know more, please contact Gill Harris on 01803 770256

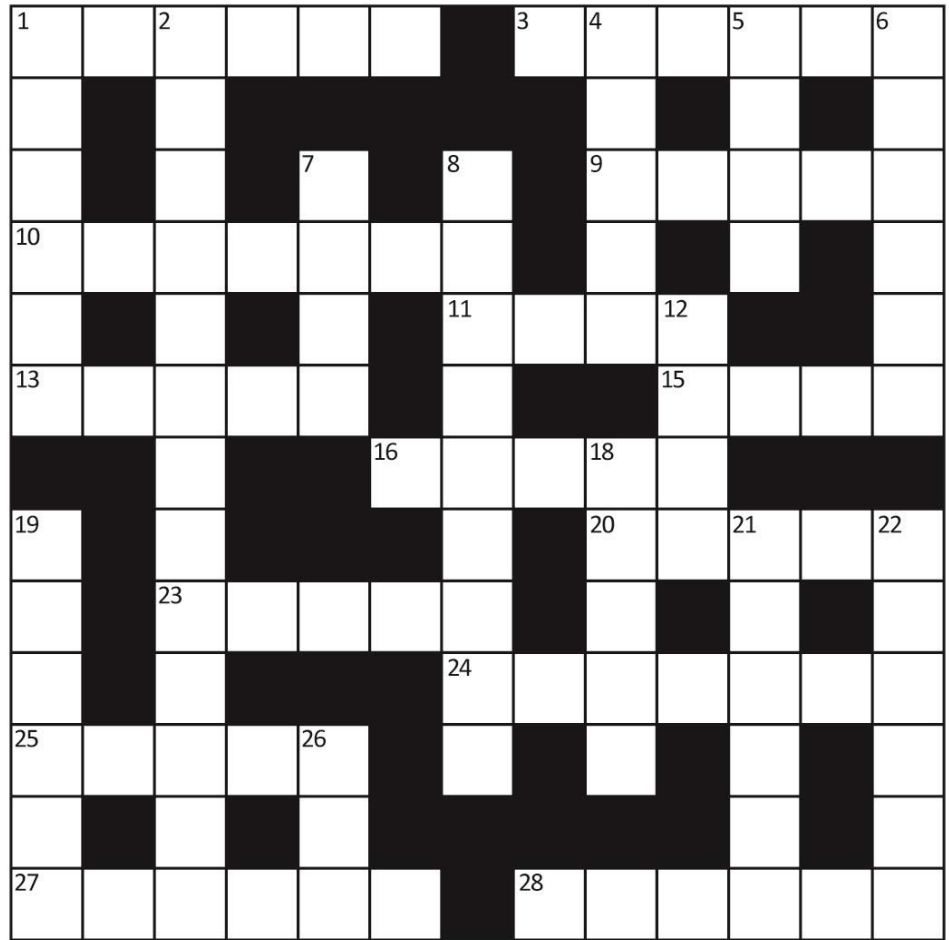


# Stretewise Crossword

Solution on page 60



**Across:** 1. This female bird will lays between 12 and 22 eggs, all in different nests.  
 3. 1 Across heralds the coming of this.  
 9. The UK's only venomous snake.  
 10. To engage in a concerted refusal to have dealings with.  
 11. Search determinedly for someone or something.  
 13. Approach.  
 15. Shout at length in an angry way.  
 16. Movable joint of a door or gate.



20. Drive or force back or away. 23. The most commonly spoken language in India.  
 24. Kitchen appliance for browning bread. 25. A Cuban rhythmic dance.  
 27. The hottest of the four seasons. 28. The action of buying and selling goods.

**Down:** 1. We should all be conscious of this footprint. 2. A flower symbolises happiness and health. 4. A small aquatic crustaceans with ten legs. 5. A small river in Belgium and in North Rhine-Westphalia, Germany. 6. A habitable attic . 7. A person who is in charge of a worker or organization. 8. Belonging to a social group that has a common national or cultural tradition. 12. A tall plant that has a wooden trunk. 18. The King of Wessex was pronounced this. 19. Island in the Mediterranean Sea. 21. Touch quickly and gently with the flat of the hand. 22. adult females. 26. Humanity's closest living relatives.

"After learning six hours of basic semaphore, I was flagging"  
 "Combine Harvesters. And you'll have a really big restaurant"  
 "I've decided to sell my Hoover... well, it was just collecting dust"



## My First flight

Contributed by Malcom Hollis

I first flew when I was about 11, which would make it around 1955. I have the vague image of the flight being a reward for passing my 11+. It was a dull grey day, not raining, but leaving little to entice visitors to the beach.



The flight was in a small red biplane, which was a De Havilland Fox Moth, and which operated off the beach in Southport. Looking back, this was not the safest of activities. The plane had crashed on take-off from Southport Beach in August 1952. It was repaired but crashed on take-off from Thruxton, Hampshire in March 1956; repaired again. In 1956 it had to ditch in the sea opposite the Palace Hotel, Southport, Lancashire. This time it was beyond repair and the recovered remains were subsequently used as spares.

Mum and Dad and my Aunt Mildred climbed into the cabin, which was a cubicle between the two wings. The cabin door was slammed shut. There was no inside handle for the thin door. To open the door you opened the window and leant out to grab the external handle, I learned later. I do not recall being strapped in but the seats were a canvas sling looped over a bar, which kept one in your place, as you sat with your knees around your ears.

THE GIRO AVIATION Co. Ltd., MARINE DRIVE and HESKETH PARK AERODROMES, SOUTHPORT.



AIR CHARTER, PASSENGER FLIGHTS and FLYING SCHOOL.





To start, the noise of the engine increased, and we were bouncing across the sands. Gradually the sand seemed to smooth, until the little plane's bobbling stopped and we were in the air. I looked down over the funfair on Southport's front and an empty beach; I spent most of the flight with my nose against the window looking down. It was great!

At the back of the cabin there was a hole through which one could see the pilot, Norman Giroux, wrapped up in leather and goggles as he was outside the plane. There was no hope of any communication with him because of the noise but still I remember my Mum's calls and shouts to Norman for him to behave as the plane turned. My Dad was uncomfortable whilst we were in the air. There were no aerobatics or anything that I recall as the little red plane clawed its way round the circuit or route that it flew, before landing back on the beach.

My Mum and Dad knew the pilot, Norman Giroux, who owned and flew the plane. He had retired as a commercial pilot at the age of 68, and ran the pleasure flights from the beach. At the time he was the world's oldest commercial pilot and had logged 30,000 flying hours. Giro Aviation operated the two Fox Moths for over twenty years on taxi work and pleasure flying from Southport beach. G-ACEJ was still flying in 2010 and G-ACCB, the one I had my first flight in, remains the subject of a planned rebuild.

The DH.83 Fox Moth was a successful small biplane passenger aircraft from the 1930s powered by a single de Havilland Gipsy Major I inline inverted engine, manufactured by the de Havilland Aircraft Company. The aircraft was designed late in 1931 as a low cost and economical light passenger aircraft.



## Stretewise - Events

### Strete Parish Hall is available to hire.

Would you like to join in with a club or activity, even help out with one-off events?

Have you got any ideas for uses of the hall? Do you know anyone who is looking for a venue? Would you like to run a club, activity or give a talk?

Contact the Parish Hall Committee.

Have you a special birthday or anniversary coming up? Why not hire the Hall with all its facilities!

**Rates are £10 per hour, with a daily rate of £60.**

The Parish Hall is available to rent for events, clubs and activities.

Book through Andrea Phillips, 01803 770786.

Or email: [streteparishhall@gmail.com](mailto:streteparishhall@gmail.com)



### We offer Domestic, Commercial and Solar PV Services

- Domestic Electrical
- Commercial & Agricultural Electrical
- Testing & Inspections
- Home Automation
- Fire & Security
- EV Charging
- Electrical Heating
- LED Lighting
- Solar PV Installation
- Solar PV Monitoring
- Solar PV Servicing
- Solar Panel Cleaning
- Solar iBoost Installation
- Solar Battery Storage

**01548 550909** - [info@danielknightelectrical.com](mailto:info@danielknightelectrical.com) - **07970 809978**

**[www.danielknightelectrical.com](http://www.danielknightelectrical.com)**



Est. 1958

# VENUS

AT BLACKPOOL SANDS

## OPEN ALL YEAR

For breakfast, lunch, ice creams & cream teas.  
Summer evening dining July & August. Offering seafood,  
grass fed burgers, wraps, pasties, full English breakfast.



**CAFÉ**  
**BEACH GOODS**

**TAKEAWAY**  
**KAYAKING & SUP**

Watersports and Venus Beach Shop open during school holidays and weekends on dry days. Kayaks, wetsuits and SUP available for hire. Take away open on dry days during the school holidays.

We offer a fantastic beach side venue for parties and weddings.

Visit our website [www.lovingthebeach.co.uk](http://www.lovingthebeach.co.uk) for opening times and full menus.

Café: 01803 770209 Watersports: 01803 770934

*Loving the beach®*

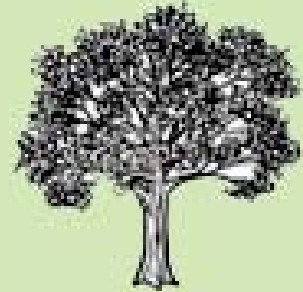


## SEASONED HARDWOOD LOGS

*Free delivery*

*Quality firewood throughout the South Hams*

**CHRIS**  
**079 122 869 17**



**TREE & HEDGE CARE**  
**GARDEN CLEARANCE**



## South Hams Property Improvements

*Bathrooms, Kitchens & General Building*

*Specializing in plastering. Boarding, rendering, tiling and all types of flooring.  
Decorating internal and external, carpentry and general building.  
Over 15 years experience in France and the UK.*

*All of the South Hams*

*Salcombe - Malborough - Kingsbridge - Loddiswell - Totnes*

*Strete - Dartmouth - Ivybridge*

**Christopher Jefferson Bland**

Tel: 07480 766671 or 01803 770766 [chrisbsb@hotmail.co.uk](mailto:chrisbsb@hotmail.co.uk)  
[southhamspropertyimprovements.com](http://southhamspropertyimprovements.com)

### **Free Legal Clinic** Mar 6, 2020 10:00 AM to 12:00 PM

We hold a free clinic in the library each month when we are available for anyone who wants to speak to a solicitor about any sort of legal issue. Our specialist areas are Wills, Lasting Powers of Attorney, trusts, inheritance tax, disputes relating to property, rights of way, landlord and tenant issues and disputes about inheritances or challenging wills. **Dartmouth Library The Flavel, Flavel Place, Dartmouth.**



## Stretewise Magazine Subscription 2020



# STRETEWISE

Subscriptions for  
Stretewise 2020  
are now due.

To order your six issues of Stretewise, for 2020, please add your details to a subscription slip available from the Strete shop. Please give your slip and payment to Monica and Andy at the Strete Post Office and Stores.

Payment for six magazine issues 2020 = £4.00

By completing the subscription slip and making your payment you will ensure that Stretewise is delivered to you by our wonderful and dedicated distribution team.

We thank you in advance and hope for your continued support for Stretewise the village and surrounding area magazine.

email: [stretewise@outlook.com](mailto:stretewise@outlook.com)

[www.stretewise.co.uk](http://www.stretewise.co.uk)

Thank you to the subscribers that have responded and paid their subscription.

### **MARIE CURIE LAUNCHES A NEW DEMENTIA BEFRIENDING SERVICE**

Marie Curie are launching a new Dementia Befriending service soon covering South Devon and Torbay and are currently recruiting volunteers. We're looking for friendly and reliable volunteers to support people living with dementia, their families and carers. As a volunteer you will take on a number of simple yet crucial tasks that will make a huge difference, this could be in a family's home, a care home or out in the community. You will provide one-to-one companionship and support, offer a listening ear, and spend time engaging in everyday conversation, activities or hobbies with the person you are supporting. We will provide you with all the training you need so you can take on the role confidently. If you can spare a few hours per week and would like to support someone living with dementia please call 0800 304 7400 to find out more about the role and how to apply.



**Dementia Befriender Volunteer**

[www.mariecurie.org.uk](http://www.mariecurie.org.uk)

# *Hyne Town House*



## RESIDENTIAL CARE HOME FOR THE ELDERLY, SPECIALISING IN HIGH QUALITY DEMENTIA CARE

Hyne Town House is a highly regarded Residential Care home in Devon for elderly people who require full time or part time professional care, sheltered housing or assisted living in a safe, luxurious, warm and welcoming, care home near Dartmouth in Devon.

Please call Paula Hounslow on 01803 770 011  
or email [hynetownhouse1@outlook.com](mailto:hynetownhouse1@outlook.com)  
**[www.southdevoncarehomes.co.uk](http://www.southdevoncarehomes.co.uk)**  
Strete, Dartmouth, Devon TQ6 0RU





**Philip Elliott**

Company Director

**01803 770787 07974 382158**

philip@elliott-construction.co.uk

www.elliott-construction.co.uk



Sunnyhurst Baileys Meadow Stoke Fleming TQ6 0QD

Building company established 1980 in Stoke Fleming.

Projects have included:

Stoke Fleming Village Hall.

Houses at Deer Combe, houses by the Green Dragon, Frenchman’s Creek.

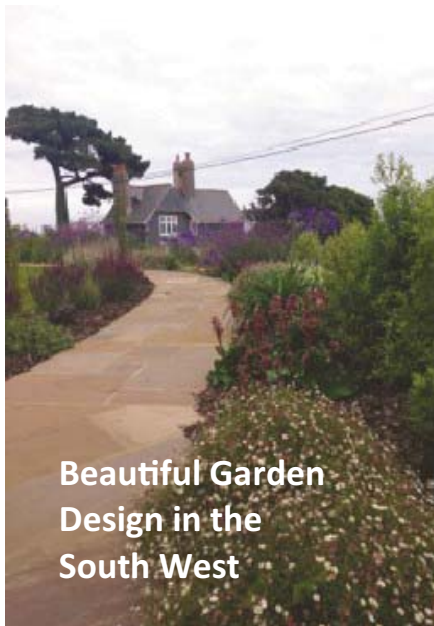
**ELLIOTT Construction 01803 770787**

**Attention to detail and quality.**

**Traditional skills without living in the past.**



From



**Beautiful Garden Design in the South West**

Beautiful garden design in the South West.

**Experienced Qualified Trained Local Garden Designer.**

Dartmouth Born and Bred - familiar with plant tolerances for climate and condition.

Qualified garden and planting designer experienced in wide variety of styles.

RHS trained in advanced horticulture.

**Complete Garden Design offered or individual borders or areas.**

**shoreline**

planting design

**Julie Elliott**

01803 770787

m 07989 564082

julie\_elliott@hotmail.com





# walk&talk

## Dartmouth Walks

### January - March 2020



**ramblers**  
at the heart of walking



<i>Date</i>	<i>Time</i>	<i>Level</i>	<i>Walk</i> (£=bring money for ferry)	<i>Meeting point</i>
<b>MONDAY WALKS</b>				
<b>3<sup>rd</sup> Feb</b>	10.00 or 10.25	1	Brixham circular (£)	10.00 – 18 bus from Kingswear Banjo or 10.25 Bank Lane Brixham
<b>10<sup>th</sup> Feb</b>	10.30	1 or 2	Dartmouth & Kingswear riverside walk via lower & higher ferries (£)	The Bandstand, Royal Avenue Gardens
<b>17<sup>th</sup> Feb</b>	09.25 or 10.10	1 or 2	Dart riverside and Dartington Cider Press circular	09.25 – 92 bus from Dartmouth Pontoon or 10.10 Totnes railway station (Plymouth side)
<b>24<sup>th</sup> Feb</b>	10.30	2	Blackpool Sands via Venn Lane	Dartmouth Leisure Centre, Townstal Return from Blackpool Sands on no 3 bus
<b>2<sup>nd</sup> Mar</b>	10.30	2	Dartmouth town and Community Orchard	The Bandstand, Royal Avenue Gardens
<b>9<sup>th</sup> Mar</b>	10.30	1 or 2	Dartmouth walk from Yorke Road via Waterpool Road to The Bandstand	Deadmans Cross bus stop, Yorke Road
<b>16<sup>th</sup> Mar</b>	10.30	2	Hoodown Woods Kingswear via higher and lower ferries (£)	The Bandstand, Royal Avenue Gardens
<b>23<sup>rd</sup> Mar</b>	10.00 or 10.25	2	Berry Head, Brixham circular (£)	10.00 – 18 bus from Kingswear Banjo or 10.25 Bank Lane Brixham
<b>30<sup>th</sup> Mar</b>	10.30	1 or 2	Above Old Mill Creek – scenic coastal and river valley views	Dartmouth Leisure Centre, Townstal

*short walks of up to about one hour ONLY when the weather is clement*

<b>THURSDAY WALKS</b>		<i>longer walks of over one hour often over more difficult terrain</i>	
<b>2<sup>nd</sup> Jan</b>	10.33 or 10.40	2	Hillhead to Kingswear via Slapper's Hill (£)
<b>9<sup>th</sup> Jan</b>	10.15	2	Blackpool Sands via Venn Lane
<b>16<sup>th</sup> Jan</b>	10.00 or 10.10	3	Churston to Dartmouth via Longwood and higher ferry (£)
<b>23<sup>rd</sup> Jan</b>	10.00 or 10.25	2	Berry Head, Brixham circular (£)
<b>30<sup>th</sup> Jan</b>	10.30 or 10.45	2	Stoke Fleming to Dartmouth Castle via Redlap Lane and Little Dartmouth
<b>6<sup>th</sup> Feb</b>	09.45 or 10.30	2	Snowdrops at Staverton Church Car transport, subject to numbers: contact one of the Walk Leaders for details
<b>13<sup>th</sup> Feb</b>	10.30 or 11.15	3	Chillington to Torcross
<b>20<sup>th</sup> Feb</b>	10.30	2	Dartmouth Castle & coves circular
<b>27<sup>th</sup> Feb</b>	10.30 or 11.00	2	Slapton Ley and village circular
<b>5<sup>th</sup> Mar</b>	10.30 or 10.40	3	South West Coast Path circular via Little Dartmouth, Warren Point, Redlap
<b>12<sup>th</sup> Mar</b>	10.00 or 10.15	2	Broadsands Beach to Brixham via golf course and The Grove (£)
<b>19<sup>th</sup> Mar</b>	10.15	2	Sandquay Wood and Old Mill Creek circular
<b>26<sup>th</sup> Mar</b>	10.30 or 10.55	3	Strete to Torcross via Strete Gate and Slapton Ley
<b>Additional Information:</b>			
<ul style="list-style-type: none"> <li>- All walkers are asked to complete a Walker Registration Form before their first walk, please arrive a few minutes before the walk in order to do this. Light coloured clothing is recommended where walks involve using busy roads.</li> <li>- Dogs are welcome on the walks. <i>Please clear up after them and ensure they are under control at all times.</i></li> <li>- Please bring any medication with you as required.</li> </ul>			
<p><b>For more information about the walks please contact the Dartmouth walks coordinator: John Salmon on 07570 848446; or email <a href="mailto:walkandtalk@talktalk.net">walkandtalk@talktalk.net</a>.</b></p>			

10.33 – 18A bus from the Banjo Kingswear or 10.40 at Hillhead Camp bus stop  
Dartmouth Leisure Centre, Townstal  
Return from Blackpool Sands on no 3 bus  
10.00 – 120 bus from Kingswear Banjo or 10.10 Churston Bridge by the Steam Train station  
10.00 – 18 bus from Kingswear Banjo or 10.25 Bank Lane Brixham  
10.30 – no 3 bus from Dartmouth pontoon or 10.45 Stoke Fleming village hall bus stop  
10.30 at Staverton Church  
Leaving Dartmouth about 09.45  
10.30 – no 3 bus from Dartmouth pontoon or 11.15 at Chillington village, 2<sup>nd</sup> bus stop  
The Bandstand, Royal Avenue Gardens  
10.30 – no 3 bus from Dartmouth pontoon or 11.00 Slapton Turn/War Memorial car park  
10.30 – no 3 bus from Dartmouth pontoon or 10.40 Deer Park bus stop Stoke Fleming  
10.00 – 120 bus from Kingswear Banjo or 10.15 Broadsands/Churston Library  
Sandquay Wood car park Old Mill Lane Townstal  
10.30 – no 3 bus from Dartmouth pontoon or 10.55 Kings Arms (2<sup>nd</sup> bus stop in Strete)



---

## A Very Big Thank You to the Stretewise delivery team

Brenda Range, Liane Baldock, Colleen Seymour, Heather Robinson, Joan Kendall, Pauline Pearce, Chris Burne, Shirley and John Goldring, Rosemarie Stevens, David Wall, Lynne Swainston and Trudy Rothwell and not forgetting Monica and Andy and the team at the Strete Post Office and Stores.

Please forgive me if I have left anyone out.

---

### Strete Social Club contributed by Joan Kendall

Most of the members of Strete Social Club gathered at the Inn in Hallwell to enjoy the start of the festive season.

The tables were beautifully adorned with Christmas Crackers and each person's place had a card, again suitably decorated with Christmas Motifs, reminding them of their choice of meal.

Crackers pulled, party hats on and discussion of the contents of their cracker, grace was said by Brenda Range and we all tucked in to a most delicious meal.

We are now in the Christmas Spirit which will help when we hold our last meeting of the year on Tuesday 17<sup>th</sup> December when we will have the usual wine and mince pies kindly given by our two leaders. At this meeting there will be a table of Christmas items on a bring and buy basis.





## Devon Air Ambulance

“The Devon Air Ambulance needs a community of volunteers to keep our 19 charity shops open and our emergency helicopters flying. Could you spare an hour or two to help your local shop? We have a host of tasks which need to be completed to make our shops a success. From customer service on the till, sorting through our generous donations, steaming, tagging and creating displays. You do not have to have any previous retail experience as we offer friendly support, training and encouragement. So why not give volunteering a go and arrange a trial session at one of our shops. This opportunity would suit anyone who would like to meet new people and help to save lives. Pop in and have a chat with our lovely Managers at 2 Smith Street, Dartmouth (01803 834605) to find out more.”



In 2018, there were over three and a half thousand landings by our aircraft in Devon and in the surrounding area when required. This figure relates to the number of times our aircraft touched down. For example, on a typical job we would take off and land four times: from our base, on scene with a patient, at hospital, then back at base. Between our two aircraft, our aircrews spent the equivalent of over a month (which is around 730 hours) in Devon's skies in 2018. In 2018 we attended around 21 patients every week on average.



## Strete Social Club 17<sup>th</sup> December, contributed by Chris Burne

### A Double Celebration

Dorothy Teal opened the Christmas meeting by wishing member, Beryl Hughes, a very happy 95th birthday. A chocolate cake adorned with candles was brought in and members sang a rousing chorus of "Happy Birthday to You".

Beryl thanked everyone and then read out a humorous poem which caused great amusement and was much appreciated. Local photographer, Nick Shepherd, very kindly came along and took some photographs of the event.

Social time followed where members enjoyed a chat, catching up on local news and events. Tea, mince pies and chocolate cake was served by Dorothy and Judith.

Members were then reminded that subscriptions were due for 2020.

Each member has been asked to bring a small gift and these were sold on the Sales Table run by Anne Blacoe. This was well supported and the proceeds were to go to a charity. Dorothy wished everyone a Happy Christmas and looked forward to seeing members at the next meeting in January.

Thank you Nick for the photographs.







## **Strete Social Club 14<sup>th</sup> January, contributed by Joan Kendall**

Despite the atrocious weather on Tuesday 14<sup>th</sup> January, being the first meeting of our club since our Christmas break, a few members braved the elements and turned up for the Annual General Meeting.

Dorothy conducted the meeting and gave a brief report of how our year had gone. Our Treasurer, Janice, then circulated a balance sheet and went through this pointing out various points. After which she is to retire. She was thanked for carrying out this post for over ten years and presented with a little gift of appreciation from us. Heather is to be our new Treasurer. Dorothy and Judy were re-elected to lead us. Our programme is full for the first half of the year and a volunteer was asked to help with organising suitable speakers to fill the rest. We will all do our bit by looking out for suitable speakers and informing one of our leaders.

Joan & Diane volunteered to make the tea. Karen gave a vote of thanks to our two leaders for all they had done for us in the past year.



# A & A COMPUTING

Covering Strete, Dartmouth  
Totnes and Kingsbridge



"Feel free to phone me for  
help or advice"

- Tony Newman



Call 0845 643 1812

Or Tel Mob 07985 009954

## On-Site Servicing:

**Repairs & Upgrades,  
Internet Access,  
Software Problems,  
& Virus Removal**

**We also supply PCs  
From budget machines  
to custom-built,  
Including  
Delivery & Installation**

# Feet First with Sam

07761 930917

Professional Foot Care by Qualified Practitioner

SMAE Qualified Dip FH, MCFHP, MAFHP. Fully Insured. DBS checked



Providing a home visiting service, I can support you with your foot care, treating the following conditions:

- \* Cutting Toe Nails
- \* Treatment of Hard Skin, Cracked Heels
- \* Ingrowing Toe Nails
- \* Corns and Callus
- \* Fungal nail and skin conditions
- \* Verrucae

Discounts for couples and groups.

Find me at 'Feet First with Sam' on Facebook  
'Feetfirstwithsam' on Instagram

Email: [feet.first3@outlook.com](mailto:feet.first3@outlook.com)



# INDOOR SELF STORAGE FOR HOME & BUSINESS



UNITS FROM  
20FT<sup>2</sup> - 200FT<sup>2</sup>

From only

**£10**  
per week



**Dartmouth**  
SELF STORAGE

**01803 835777**

[indoorselfstorage.co.uk](http://indoorselfstorage.co.uk)

**TOTNES STORAGE ALSO AVAILABLE**

# Pura Vida

Professional  
Personalised Hairdressing

**01548 581000**

Unit 1A Fairfield Meadow  
Orchard Way Chillington  
Kingsbridge TQ7 2LB

Opening Hours

Monday By Appointment Only

Tuesday 8am to 7.30pm

Wednesday 8am to 7.30pm

Thursday 8am to 5.30pm

Friday 8am to 5.30pm

Saturday By Appointment Only

[www.hairbypuravida.co.uk](http://www.hairbypuravida.co.uk)

## Advertising in Stretewise

**Stretewise** is the Strete Village and surrounding district magazine. Why not advertise your services in the Stretewise magazine. We have an expanding distribution base which could benefit your customer awareness? The magazine is published bi-monthly. So, your ad is included in six issues over the year. The advertising subscription is for a year December to December.

A5 full page £150 (six issues)

(£25 per ad)

Half Page (A5) £40 (six issues)

(£6.66p per ad)

One third page £25 (six issues)


(£4.16p per ad)

### Stretewise Advertising:


contact [stretewise@outlook.com](mailto:stretewise@outlook.com)

or Dave Jones 01803 770059.

Plus inclusion on the [www.stretewise.co.uk](http://www.stretewise.co.uk) website.




**Watermill Cottages**



**We really welcome dogs**

Perfect for walkers and nature lovers, comfy C18th cottages in 20 acres of unspoilt S Devon valley in AONB, upstream from Slapton Ley National Nature Reserve. Own fenced garden, log burner, walks from the cottage door. Close to beaches and pretty villages. A real digital detox and off the grid holiday. Holidays like they used to be, away from it all...



Open all year short breaks available.  
**Phone us on 01803 770219**  
or see [www.watermillcottages.co.uk](http://www.watermillcottages.co.uk)



## Selworthy Veterinary Group

[www.selworthyvets.co.uk](http://www.selworthyvets.co.uk)

[reception@selworthyvets.co.uk](mailto:reception@selworthyvets.co.uk)

**01548 853322**  
**KINGSBRIDGE**



For help and advice regarding your animals, large or small, contact our friendly staff.

**Stumpy Post Surgery, Kingsbridge, Devon TQ7 4BL**



# RGC

**BUILDING SUPPLIES**

## KITCHENS

Inspirations

**75%  
Off**  
RRP

**Kitchens • Bathrooms • Interiors**

Collingwood Road Dartmouth TQ6 9JY  
01803 834622 [rgcbuildingsupplies.co.uk](http://rgcbuildingsupplies.co.uk)

🐾 🌸 🌸 🌸 🌸 🌸 🌸 🐾 🐾 🐾 🐾 🐾 🐾 🐾



**SCRUFFY PUPS DOG GROOMING**  
Pittaford Farm near Slapton, TQ7 2QG

🐾 **25% DISCOUNT OFF YOUR DOG'S FIRST GROOM** 🐾

🐾 **FREE local collection and delivery service available** 🐾

🐾 **Contact Justine - 07967 965073** 🐾

🐾 🌸 🌸 🌸 🌸 🌸 🌸 🌸 🌸 🌸 🌸 🌸 🌸 🌸 🌸 🌸 🌸 🌸

# RGC mobility

**KITCHENS & BATHROOMS FOR INDEPENDENT LIVING**

- Grab Rails
- Wash & Dry Toilets
- Adapted Taps
- Side Opening Ovens
- Rise & Fall Worktops
- Wet Rooms
- Walk-in Baths
- Raised Toilets
- Seated Showering
- Level Access

Collingwood Road Dartmouth TQ6 9JY  
01803 834622 [rgcbuildingsupplies.co.uk](http://rgcbuildingsupplies.co.uk)



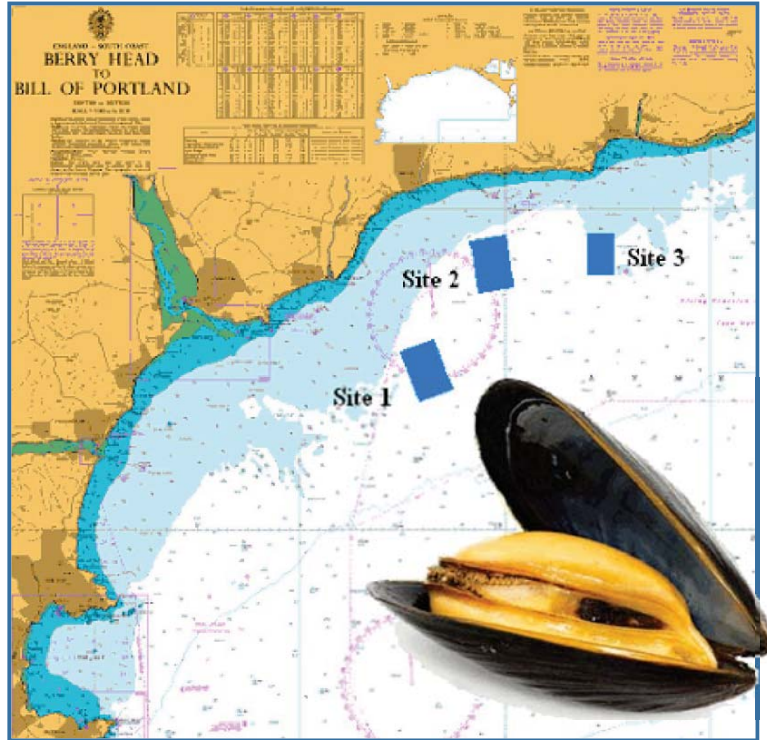
# Europe's Largest Mussel

## offshore shellfish Ltd

Offshore Shellfish is a family run business, Founded by John and Nicki Holmyard, who have been involved in the mussel and seafood industries for more than 25 years - to 30 years.

Offshore Shellfish are building the UK's first large-scale fully offshore, rope cultured mussel farm off the coast of South Devon.

Offshore Shellfish Ltd, operating out of Oxen Cove in Brixham, wants to increase the size of its vast farm, six miles offshore in Lyme Bay, to use all of the lease space of 1,540 hectares – about the size of the entire site of Heathrow Airport. The development will eventually be the largest of its type in European waters and will cultivate the native blue mussel at three sites between 3 and 6 miles offshore in



Lyme Bay South Devon.

Around 10,000 tonnes could be harvested and processed from the farm in Lyme Bay every year with sales reaching £15million. The three-year trials have been completed and the farm is now in the build-out phase. The leased site takes up 1% of Lyme Bay and the farm is one third built.

Ropes are put out in April or May to catch the spat before the seeds – or young mussels – are distributed onto new ropes with space left to grow before being harvested within a year. No chemicals or additional processes are needed, with the mussels taking all the nutrients they need from the sea.



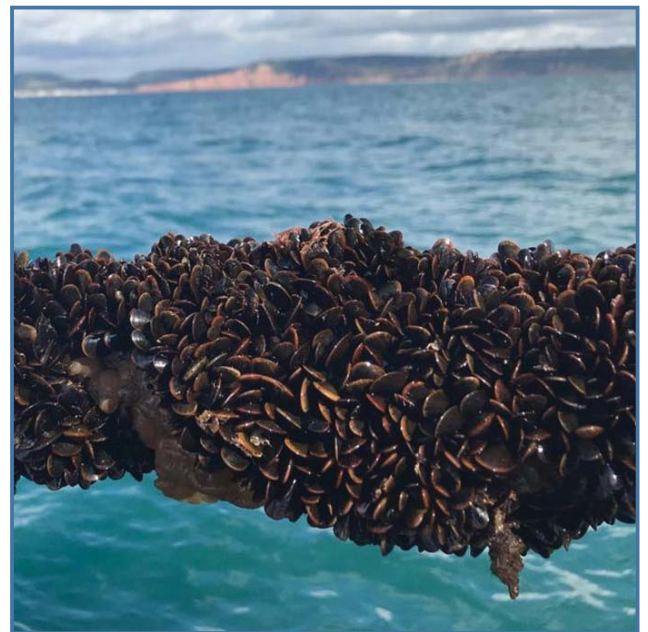




When plans to establish the mussel farm were initially unveiled, many local fishermen voiced opposition to the idea of being excluded from 15 square kilometres of their traditional fishing grounds. However, to date, evidence of increased catches in the vicinity of the mussel lines, have encouraged hopes that fishermen will soon see the value of the farm.

The plan is to tap into the European market – selling into main processors in Holland who supply 100,000 tonnes a year to France and Belgium. It will mean the family-run business, owned by John and Nicki Holmyard, would become one of the largest employers in Brixham, creating around 70 jobs and generating millions of pounds for the South Devon economy.

Now, the Torbay Development Agency is seeking funding to press ahead with plans to allow Oxen Cove to be used by the marine industry after the idea was agreed in principle by Torbay Council’s harbour committee. The move will pave the way to create a ‘shellfish village’ with the hope of attracting similar businesses to the site.





# TOTNES CROSS

G A R A G E



MOT



SERVICING



REPAIRS



DIAGNOSTICS

01803 712533

[www.totnescrossgarage.co.uk](http://www.totnescrossgarage.co.uk)



**£5** Discount on a MOT when this voucher is presented before test  
Valid 2019 - 2020

## DARTMOUTH HOLIDAY HOMES



[www.dartmouthuk.com](http://www.dartmouthuk.com) 01803 833082



*Perfect properties in a perfect place*

Trusted, reliable, knowledgeable, local





*Specialising in:*

Roof Repairs  
Gutter Installation  
Gutter Cleaning  
UPVC replacement/  
repair  
Cement Work  
Glazing  
Holiday Home  
Maintenance  
Joinery

## Property Repairs

# D M Edwards

## established 1984

### 07713 636 251

Locally based sole trader  
established over 30 years  
Trusted and Reliable

No job too small  
No VAT  
No call out charge

Tip the scales in your  
favour—choose a  
reputable trader

Friendly Professional  
Service  
Free Estimates

# COPPER TOPS



## TREE SURGERY

**01803 712632 07782 349069**

Landscape Design & Build

**FENCING • HEDGE CUTTING  
LOGS • GARDEN MAINTENANCE**

**[www.coppertopstreesurgery.co.uk](http://www.coppertopstreesurgery.co.uk)**

# STRETE PARISH COUNCIL

Clerk: Mrs Helen Darch

Homer Park, Strete, Dartmouth TQ6 0SJ

streteClerk@gmail.com 01803 770018 www.strete.org.uk

## MINUTES OF A MEETING OF STRETE PARISH COUNCIL (PC) HELD IN STRETE PARISH HALL ON THURSDAY 21 NOVEMBER 2019 AT 7.00 PM

### PRESENT

Cllr Kate Gill, Chairman (KG); Cllr Louise Newman (LN); Cllr Ralph Clark (RC); Cllr Ian Cumberlidge (IC); Cllr Peter Hales (PH); Cllr Graham Campbell (GC); Cllr Julian Brazil, County Councillor, Kingsbridge Division (JB) ; Mrs. Helen Darch – Clerk;

### PUBLIC FORUM

No members of the public attended.

### COUNTY COUNCILLOR'S REPORT

JB spoke on the closure of the A379 at Asherne planned for December, and Stoke Fleming where there was presently a diversion through the village. The A379 at Stoke Fleming would be closed entirely from next week when works would move to outside the Post Office. Gigaclear are installing optic fibre and the consequent road closures have pushed back road closure for the South West Water works at Asherne which will be expected to be put back to March 2020. GC requested clearer signs to indicate where roads are closed so drivers can take alternative routes with better information.

A parishioner had emailed to inform a wall along the side of Vicarage Lane and the cut through to Start Bay Park was in a poor state and would need repair. JB advised that Paul McFadden, the footpaths officer at DCC be contacted regarding the wall. Paul would check if the wall was on a public footpath or a permissive path [used with permission of the landowner]. If a public path then DCC would most likely be responsible for works to repair the wall. Otherwise it was likely to belong to a landowner and be their responsibility for repair.

**Resolved: The Clerk contact Paul McFadden to discuss the location and find out whether the wall was part of DCC infrastructure. If this was not the case then it was most likely part of a landowner's property.**

**The report was received.**

### DISTRICT COUNCILLOR'S REPORT

JB spoke on behalf of RF who was absent. As there is a general election on December 12<sup>th</sup> councils are in purdah. This affects council business. Budgeting and the setting of budgets will probably take place after the election in case of any political bias. The Climate Change emergency action plan is due 5<sup>th</sup> December.



JB mentioned housing strategy where there is a desire to intervene and build generally affordable housing. It is likely that an arms-length company will be set up to run housing provision as there is a wariness about central government intervention [previously seen in Right to Buy and policies surrounding social housing]. Loans can be taken out to finance works with the Public Works Loan Board at just under 3%. The intention is to match the term of the loan taken out with the investment made. The company will not consider more speculative ventures for instance hotels.

IC brought up bridleways and the recent 'road race' at Prideaux Lane. Prideaux Lane is a bridleway [on DCC maps] but JB wondered if it was also a Byeway Open to All Traffic [BOAT]. Cars may drive along a BOAT but these are mainly used by walkers. Regarding the recent activity JB stated it was most likely criminal activity and if ID could be obtained DCC could pursue a case. DCC would have to act anyway as the bridleway was being damaged. Interim measures were discussed including temporary blocks [trees] across the road that allowed farmers to pass through but kept road traffic at bay. It would also be useful to find out who owned the land along the lane.

LN then mentioned potholes and the problems being experienced at Orestone and Snails Castle. JB said he would report this. The Clerk offered to measure the potholes when the road was dry.

**Resolved: The Clerk to investigate the potholes further as weather permits; JB to mention the potholes at DCC.**

*Since the meeting the Clerk has been down the route and recorded the state of the road.*

**JB then left the meeting.**

**1119/1 APOLOGIES** – Cllr Richard Foss, District Councillor, Allington & Strete Ward (RF); Cllr David Rothwell (DR).

**1119/2 MINUTES OF THE PREVIOUS MEETING HELD ON 17 OCTOBER 2019**

The above minutes were updated as **GC noted there had been a resolution to write to SHDC regarding the outcome and handling of the Blindwells appeal.** These were then AGREED as a true and correct record and were signed by the Chairman.

**1119/3 DECLARATIONS OF INTEREST**

Parish Councillors were invited to declare any unregistered or other interest, including the nature and extent of such interests they may have in any items to be considered at this meeting. **None were declared.**

**1119/4 CLERK'S REPORT**

**Pub and Asset of Community Value.** The Clerk circulated an updated letter of support for comment which now allows parishioners to opt into certain pledges. Parishioners will need to return this and it will be part of the submission to SHDC to retain the Pub on The Asset of Community Value register.

PH wondered if the council was clear why it wished to go ahead with renewing the registration for the pub. Councillors then expressed views on the uncertainty of future intentions for the pub. **Resolved: the publican [Mr Mark Hildyard] be invited to meet with the council and Clerk early in the new year to talk about the pub and the application which is still in draft stage before the council go ahead with the application.**

*Since the meeting the Clerk has drafted a letter of invitation which has been circulated to councillors.*

**Sapper James Gordon.** Quote still awaited from The Church.

**WIFI.** The Clerk has been on site with Lesley Andrew to chat about the relocation. This can be done by the electrician used by the Hall committee. He will confirm a price and install the hub in a secure box above the notice board. **Resolved: the council is happy just to seek the one quote [subject to the actual quote] and get the works done. There is still £139 of the grant left.**

Related to this the hall committee would like to offer the WIFI as part of their hire to users. **The contract is unlimited downloads and usage for £20/month to April 2020. Resolved the council is happy to have the broadband as it stands offered as part of a hire package.**

**Reminder of elections and purdah.** The clerk had recently circulated advice on the conduct of councillors and the stance of the parish during purdah. This is the same as that sent out during the last elections. Essentially councillors may act in their own names but not represent the parish ie use their name as councillor or use the parish website or other parish resources to promote candidates. Election notices from SHDC have been placed on the boards and on the website.

**The report was received.**

**1119/5 CHAIR'S REPORT 21<sup>st</sup> November 2019**

**Slapton Line.** Earlier this week I contacted Peter Chamberlain with regard to the progress on moving the War memorial to its new site at Strete Gate. An email was sent by Peter on 18<sup>th</sup> November and this was forwarded to all councillors.

**Strete Gate.** Trying to think ahead I have taken some photographs of the road up to the carpark. Before next season we have to come to terms with reinstating the steps from the carpark and from the toilets to the beach. Funding is going to prove difficult and I mentioned this in my email to Peter.

*'I was wondering if the funds we had at our disposal would be enough to widen the bit of road up to the carpark. We do all realise that we shall need to make the carpark bigger and the road commensurately wider to take the extra traffic safely. We also have to deal with the problem of access to the beach from the carpark. From my perspective it is all interlinked. Also, the access from the carpark to the public toilets and then onto the beach which is the bit in the narrowest part of the road. '*



From a layperson's viewpoint it appears possible to widen the road simply. Sadly, I have not been able yet to download the pictures onto my computer.

**Playpark.** Helen has the repair of the goal post in hand. The notices will be changed and renewed with up to date information.

**Road to Snails Castle past Orestone.** We have received emails about the state of the road as potholes and surface condition from Giles Halliwell. I lived at Snail's Castle for 5 years some 40 years ago. I am very familiar with the road. Over the years its state has varied. I'm afraid I have seen and used it in a worse state than now. Only last Saturday I gave a guided tour to some BasH visitors which included a drive down to Snail's castle and a turnaround at the turning space there. The leafy surface from below Orestone was the most slippery surface. The rest was less troublesome.

**The Chair's report was received.**

#### **1119/6 PLANNING & PLANNING MATTERS**

**3351/19/VAR The Old Vicarage Hynetown Road Strete TQ6 ORS.** Variation of condition 2 (approved plans) demolition of existing dwelling including detached garage and the construction of replacement dwelling) for design amendments. **Resolved: to support the variation.**

**3095/19/HHO Moortosea Totnes Road Strete TQ6 ORU.** Householder application for rear extension. **Resolved: no comments to make.**

**3076/19/FUL The Coach House Tallis Rock Vicarage Lane Strete TQ6 ORN.** Demolition of existing dwelling and construction of new dwelling. **Resolved: to object over, first, concern that the site is being overdeveloped ie the planned building is large in relation to its existing site; second, concern about the proposed roof height in comparison to that of the existing building; finally that more information is needed on the plans to be clear what is proposed.**

Councillors also discussed **Landcombe House [2859/19/HHO]** where the application had been withdrawn. There shouldn't be any works taking place in connection with this application now. It was also noted that the committee decision on **2857/19/CLP** Certificate of lawfulness for proposed development - erection of porch and extension and other alterations to dwelling at Landcombe House had been a split decision. IC noted he would apply for a tree preservation order [TPO] on the tulip tree at Landcombe. **Resolved: The Clerk to consult with SHDC planners on why the application had been withdrawn, to ask an enforcement officer to visit and check the site is compliant, and to find out why there had been a split decision on the certificate of lawfulness application. IC to apply for a TPO on the tulip tree.**

Councillors also discussed **Fallogen [2122/18/HHO]** where there was some concern over the extent of scaffolding. Extensive works appeared to be in progress. **It was resolved that the Clerk contact SHDC enforcement team to ensure works were being carried out in accordance with the approved plan.**

## 1119/7 NEIGHBOURHOOD PLAN

### NP Report for PC – November 2019

An email from Locality was received on 30/10/2019 requesting an update on our progress with getting our NP made. Locality is the organisation that has provided funding and technical support in producing our NP. The following response was submitted:

Strete NP is still not made.

The landowner of the site selected for housing development died earlier this year. The landowner's agent is currently unwilling to approve the site for inclusion in the NP on a viability basis and the plan's 2nd home policy.

The examiner has suspended any decision for 6 months until 10 December pending joint negotiations. Although the plan is considered to be sound it is likely a further 6 months suspension will be recommended to allow time for probate to be concluded and further negotiations to take place. Proposals to address the viability concerns of the land agent have been submitted but these need the landowner's approval. It is hoped a resolution can be secured in the new year.

A response to the letter submitted to Strete Estate dated 9<sup>th</sup> September 2019 following a meeting with Mr Dixon of Savills was received on Tuesday 19<sup>th</sup> November 2019.

Despite the NP having been acknowledged by SHDC as having met all the regulatory requirements in its preparation and evidence content, Mr Dixon has again repeated his objection to the second home policy included in the plan and his viability concerns in relation to community aspirations for a car park and link road as part of proposed housing development for 17 homes in Cox's Farm Fields.

The final sentence of his reply states that 'unless these preconditions are removed from the NP the examiner must now be informed that the landowner objects to the policy and does not make the land available as set down in the NP'.

Removal of the site from the NP is the estate's preferred outcome as it is perceived that this will provide an opportunity to negotiate any development conditions that may arise direct with SHDC planning department.

This makes the work of volunteers over the past 4½ years to ease the process to approve housing development planning in the village pointless. A meeting has been requested with Duncan Smith (SHDC NP representative) and the examiner to consider proposals for an appropriate response.

RC will be meeting with Duncan Smith of SHDC on 18<sup>th</sup> December and will meet with the Neighbourhood Plan steering group [steering group] before this to discuss a way forward.

*Since the council meeting a meeting of the steering group has been called for the 3<sup>rd</sup> December at the Parish Hall.*

**The NP report was received.**



## **1119/8 UPDATE ON THE SLAPTON LINE, PLACING OF THE WAR MEMORIAL & PROVISION OF EXTRA PARKING ALONG THE SLAPTON LINE**

KG said she would forward Peter Chamberlain's email of the 18<sup>th</sup> November on the Line to all. IC asked if there had been contact made with the US authorities as discussed in earlier meetings. KG confirmed she had met a representative of the US Embassy and obtained his card at the Tiger memorial ceremony in April. However, there had been no discussion with the US authorities on the relocation. IC wants to speak with this representative as there have been objections in Slapton to the removal of the monument to its site at Strete Gate. He also noted an engineer had assessed the current site as stable. **Resolved: IC to obtain details of the US contact from KG and approach them concerning the relocation of the war memorial.**

## **1119/9 ACCESS TO THE BEACH FROM THE PUBLIC TOILETS**

This has been covered in 1119/5. **Brought forward resolution: KG to email RF regarding the steps as he was going to look into this.**

## **1119/10 VILLAGE PUMP**

IC had inspected the pump recently and removed some ivy, it is stable, and matters are in hand. **The report was received.**

## **1119/11 UPDATE ON CONTRACTS**

**Greenspace.** A bill for four cuts up to November had been received in the sum of £407.60 and GC was happy the work had been done. No cuts are planned for December in the contract but this is subject to growth and need. **Resolved: The Clerk will add the bill to the list of cheques to be paid.**

## **1119/12 COUNCILLORS' REPORTS**

**KG (Chair) Playpark.** This had been covered in 1119/5.

**LN Transport and Roads.** John Gilbert will come and cut hedges in December. The issue of potholes at Orestone/Snails Castle had been discussed in the District Councillor report. LN had not been down the road to Strete Gate recently. KG remarked the works on the wall down there were well done.

RC noted the sign into the village from Strete Gate was overgrown with vegetation. GC wondered if some sort of block could be lain on Prideaux Lane to stop road racers but it would have to allow access for farmers who use the lane.

**DR Health and Safety.** The defibrillator is installed in the telephone box. DR was absent so the Clerk read out from the memorandum of understanding which covers the terms between the Council and the South Western Ambulance Service NHS Foundation Trust [SWAS]. This is a four-year agreement which includes annual training on the use of the defibrillator. Obligations on the council include a daily visual check and a monthly online report on the status of the defibrillator. A copy signed by the SWAS is still required. **Resolved: The Clerk circulate a copy of the memorandum to all councillors for information.**

**IC Rights of Way, tree warden and Strete Gate.** Rights of Way are fine at the moment and being well-used. There are two broken finger posts: one down from Asherne and one at the top of Prideaux Lane. The one down from Asherne was reported in August by the Clerk to DCC/ Coastal access (Jane Beech).

**Tree warden.** Three trees at Landcombe had been cut down but the tulip tree remained. **Resolved: IC will pursue a tree preservation order on the Tulip tree.**

**Strete Gate.** The Pay and Display sign has been demolished. **Resolved: IC to speak with SHDC regarding signage.**

**RC Planning and Neighbourhood Plan.** RC noted there was nothing to add.

**PH The VAS sign and local transport liaison.** PH noted there was nothing to add.

**GC Village Green.** Dartmouth Town Council has now got Stagecoach to agree to run an hourly bus to Torbay Hospital via Totnes. Around £100,000 funding is required toward the route. However, a taxi to the hospital would cost around £40 to £80 each way. There had been a complaint about the amount of dog faeces left on the village green despite the poo bags which are at the gates.

**1119/13(a) FINANCE**

The Clerk supplied the meeting with a list of cheques for payment. One late cheque 1688 was added to the list on the agenda and agreed under minute 1119/11.

1683 – Terry Hallett grass cutting June – October inc £280.00..	1684 – Clerk salary November £249.00.
1685 – Strete Parish Hall hire October £30	1686- £25 donation toward The Royal British Legion for a wreath on Remembrance Sunday.
1687 – Clerk expenses June to October including broadband recharge £128.70.	1688 –Greenspace invoice 1262 grass cutting August to November inclusive £407.60.

**Proposed and AGREED by all present to authorise payments as enumerated above.**

**1119/13(b) FINANCE**

A monitoring report for the year to November 2019 had been circulated already along with a cashflow projection. The latest projection of 2019/20 to the end of November gives CR 5,560.03. It was agreed the latest monitoring should be published on the noticeboards. LN asked that an amount be provided for John Gilbert’s hedge cutting in the near future.

**Resolved the Clerk would provide the monitoring statements for the boards and website. The Clerk to provide for hedge cutting costs in the next projection.**

**1119/13(c) FINANCE**

Cash at bank – £8,176.63 CR Current account at 08/11/19, £10,285.41 CR Business Reserve account at 08/11/19.



#### **1119/13 (d) FINANCE.**

**Draft financial regulations.** These were circulated earlier in an abridged form suitable for a smaller parish as Strete. **Resolved: to adopt the abridged Financial regulations.**

#### **1119/13 (e) FINANCE.**

**Precept.** The Clerk had circulated a first-draft precept to councillors for discussion. The budget needs to be set and a precept notified to SHDC by 31<sup>st</sup> January 2020. This budget included estimates provided by GC for the Greenspace contract, St Michael's Parish Church toward the churchyard, and a number of routine expenses and regular income. IC asked if a lodgement toward his expenses on clearing the buddle holes could be included. RC asked for £1,000 to be lodged toward the Neighbourhood Plan. A brief discussion took place. **Resolved: to carry over the budget setting to the December meeting and include the estimates listed herein for discussion.**

#### **1119/14 CORRESPONDENCE**

Correspondence as listed on the agenda was noted

#### **1119/15 REPORTS**

Councillors were asked if there was anything else to add. All declined.

#### **1119/16 THE NEXT PARISH COUNCIL MEETING WILL BE HELD ON THURSDAY 19 DECEMBER 2019 IN STRETE PARISH HALL AT 7.00 PM.**

**THE MEETING WAS CLOSED** at 9.40 p.m.

Signed: Cllr Kate Gill (Chair)

Dated: 19 DECEMBER 2019

#### **ACTION POINTS:**

**Clerk: to investigate the potholes further as weather permits; the publican [Mr Mark Hildyard] be invited to meet with the council and Clerk early in the new year to talk about the pub and the ACV application which is still in draft stage before the council go ahead with the application; to consult with SHDC planners on why the application at Landcombe had been withdrawn, to ask an enforcement officer to visit and check the site is compliant, and to find out why there had been a split decision on the certificate of lawfulness application; to contact SHDC enforcement team regarding the works at Falloden; to circulate a copy of the memorandum of understanding for the defibrillator to all councillors for information; to provide the monitoring statements for the boards and website; to provide for hedge cutting costs in the next projection.**

**KG: to email RF regarding the steps as he was going to look into this.**

**IC: to obtain details of the US contact from KG and approach them concerning the relocation of the war memorial; to pursue a tree preservation order on the Tulip tree; to speak with SHDC regarding signage at Strete Gate.**

## Politically Corrected - Michelin Man

Created by the Michelin brothers and poster artist O'Galop (Marius Rossillion), the Michelin Man was a great success. The Michelin Man has evolved since his creation in 1898, becoming a modern, health and fit individual showing none of the bad and indulgent habits of his early incarnation.

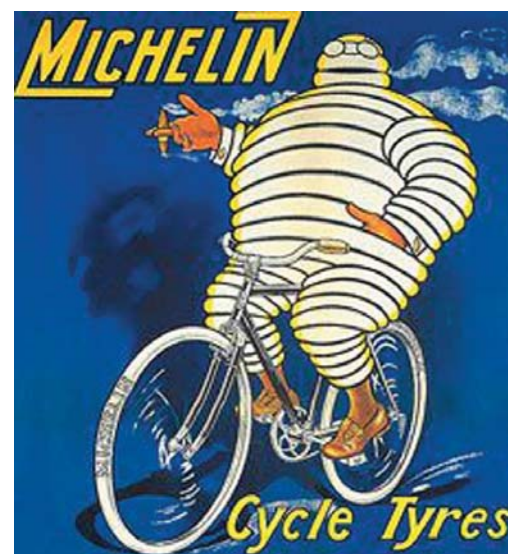
He changed from the cigar puffing, rotund drinker to a fit muscle figure capable of running alongside and protecting any modern vehicle.

The original poster advertisement used the man made of tyres, holding a mug full of nails and pieces of glass with the phrase "Nunc est bibendum" with the title and the tag *C'est à dire: À votre santé. Le pneu Michelin boit l'obstacle* ("That is to say: Here's to your health. The Michelin tyre drinks up obstacles"). The creation went on to become known as the "Bibendum". Tires were not coloured black until 1912, so Bibendum appeared as a pile of white tyres which was the inspiration for the original character design. Prior to 1912, tires were either grey-white or had a light beige hue. Carbon was subsequently added to the rubber formula as a preservative and a strengthener. It is difficult to comprehend



the original Michelin Man being acceptable in today's health-conscious society which considers smoking as not acceptable in public and that we all drink responsibly.

**Michelin Guides** are a series of guide books published by Michelin for more than a century. The annually *Michelin Red Guide*, the oldest European hotel and restaurant reference guide, which awards up to three *Michelin stars* for excellence to a select few establishments.





## Politically Corrected - Camp Coffee

Camp coffee was first created in 1885 by Campbell ("Camp") Paterson (1851-1927) of R. Paterson & Son in Glasgow. The company specialised in cordials, and their best-selling product was a raspberry cordial added to whisky or brandy to create a drink known as "Cuddle-me-Dearie". The coffee essence was developed by Campbell Paterson for domestic use, to avoid the complex and then expensive equipment required for coffee drinking. Camp is a thick black syrup, of sugar, water, coffee and chicory essence.



The illustration for the original bottle label shows a Sikh serving coffee to a Major General and is obviously portrayed as a 'servant' with a tray. For many years Sikhs have objected to this image of servitude. Over the years these objections have been considered and the label design changed from the Sikh hold a tray, to not serving from a tray but still standing. Finally, this is changed to the Sikh and the Major General sitting and sharing a drink of coffee together. Major General Sir Hector MacDonald was the model for the Gordon Highlander on the label design.



## Stretewise - Events - Probus

The Probus Club of Stoke Fleming & District

Where friendliness matters above all else.

We are non-sectarian, non-political and a not-for-profit club.

We support the concept of charitable activities but do not undertake any fund raising or charitable works.



The inaugural meeting of the spring/summer session 2020 will be held at 10.30am at the Stoke Lodge Hotel, Stoke Fleming **Wednesday 12th February 2020**

### Wednesday 12th February 2020

The meeting will commence at 10.30am with coffee, followed by a talk by **Peter Barker** entitled **Georgia**.

A location at the very crossroads of Europe together with a long and varied history makes this country a fascinating place to visit.



### Wednesday 26th February 2020

The meeting will commence at 10.30am with coffee, followed by a talk by **Joan Potts** entitled **How to write your memoirs**. Tempted to leave your story for your grand children? Perhaps a few pointers may be of assistance?

### Wednesday 11th March 2020

The meeting will commence at 10.30am with coffee, followed by a talk by **David Hinchcliffe** entitled **Hill Figures of England**. A look at those strange and very effective figures around England, some very old, some perhaps not, but always very fascinating.



### Wednesday 26th March 2020

The meeting will commence at 10.30am with coffee, followed by a talk by **Sarah Farnsworth** entitled **Dementia**. What is it? what are the symptoms? can it be avoided? can it be treated? All very pertinent questions—there are likely to be one million plus cases by 2022.



The club is keen to attract new members and a warm welcome will be given to guests. If you would like to come along and be a guest please contact **Graham Lewis, our Secretary, on 01803 712248**





### Wednesday 8th April 2020

The meeting will commence at 10.30am with coffee, followed by a talk by **Dave Jeffery** entitled **The Potential of Driverless Cars**. Dan Dare used them in the Eagle comic in 1950: 70 years on they are under very serious study and development.

### Wednesday 22nd April 2020

The meeting will commence at 10.30am with coffee, followed by a talk by **Roger Hamilton** entitled **Dutch Windmills**. Normally associated with pictures of Dutch country folk wearing clogs and baggy trousers, they actually built a large part of Holland.



### Wednesday 13th May 2020

The meeting will commence at 10.30am with coffee, followed by a talk by **Mike Lakey** entitled **The Battle of Britain**. 80 years on from the 1940 battle—some thoughts from a former RAF pilot.

**Summer Outing . Wednesday 20th May 2020** Lunch and something a bit special.

### Wednesday 10th June 2020

The meeting will commence at 10.30am with coffee, followed by a talk by **Norman Maudsley** entitled **Walking in the steps of Lawrence of Arabia**. Lawrence rose to be an advisor to kings and governments. He was a lover of camels and motor cycles.



### Wednesday 24th June 2020

The meeting will commence at 10.30am with coffee, followed by a talk by **John Wibberley** entitled **Trees for All**. Summer is the perfect time to think about trees and cool forests!

### Wednesday 8th July 2020

The meeting will commence at 10.30am with coffee, followed by a talk by **Paul Young** entitled **Attack on the World Trade Centre**. 19 years ago. Is this sufficient time to objectively review the terrible attack that changed a nation's foreign policies?



# STRETE PARISH COUNCIL

Clerk: Mrs Helen Darch

Homer Park, Strete, Dartmouth TQ6 0SJ

streteClerk@gmail.com 01803 770018 www.strete.org.uk

## MINUTES OF A MEETING OF STRETE PARISH COUNCIL (PC) HELD IN STRETE PARISH HALL ON THURSDAY 19 DECEMBER 2019 AT 7.00 PM

### PRESENT

Cllr Kate Gill, Chairman (KG); Cllr Louise Newman (LN); Cllr Ralph Clark (RC); Cllr Ian Cumberlidge (IC); Cllr David Rothwell (DR); Cllr Graham Campbell (GC); Cllr Richard Foss, District Councillor, Allington & Strete Ward (RF); Mrs. Helen Darch – Clerk; a member of the public.

### PUBLIC FORUM

A member of the public [Ms. Dixon] attended to talk on the wall spur at the junction of Vicarage Lane and the cut through to the Start Bay estate. This was reported in the minutes for the November meeting in connection with Magnolia Cottage. The wall was the subject of correspondence and the Clerk had visited to look at the wall and take photographs. Lisa Edmonds [Devon County Council Highways [DCC]] had given advice on whether the wall was part of the highway or belonged to a private landowner. The matter of the wall is outside the powers of the parish council but councillors offered to advise on the history of the wall and its possible ownership.

**It was resolved that Ms. Dixon would contact DCC direct and let the council know of any progress.**

*Since the meeting the Clerk has emailed Ms. Dixon and copied Cllr Brazil as the contact for DCC Highways.*

### COUNTY COUNCILLOR'S REPORT

Cllr Brazil was absent so RF reported on County matters. One initiative is to become carbon neutral by 2030. <https://www.devonnewscentre.info/devon-county-council-aims-to-be-carbon-neutral-by-2030/>

Parishes will be organized into working groups and be asked to come up with ideas to reduce their carbon footprint. IC wondered if planting trees would help.

**The report was received.**

### DISTRICT COUNCILLOR'S REPORT

RF noted that budgets had not been set yet but he will report back once the SHDC budget had been agreed. The settlement from Central Government was still unknown and it is unclear what will be offered to rural areas or whether this will be 'fair'. The matter of the parish precept was briefly touched on and RF advised a small increase in the precept be made each year to build reserves and provide for resilience.



A discussion took place on how to achieve a carbon neutral status in house building and design: in particular to use appropriate materials and aim for energy efficiency. RF recommended being carbon neutral was referred to in the Neighborhood Plan which RC confirmed was the case.

RF spoke on the empty homes premium and how SHDC had adopted the recommendations of The Rating (Property in Common Occupation) and Council Tax (Empty Dwellings) Act 2018. file:///C:/Users/user/Downloads/SN02857.pdf

The 'empty homes premium' permits billing authorities in England, Scotland and Wales to increase council tax on properties which have been 'unoccupied and substantially unfurnished' for a long period of time. It is for the billing authority to decide whether to levy an empty homes premium. Before 2019/20, billing authorities could charge up to 150% on properties which have been unoccupied and substantially unfurnished for over two years. From 2019-20 onwards, councils may levy a higher charge on empty homes. Thus, council tax-payers may be required to pay 200% of the standard bill after two years; 300% of the standard bill after five; and 400% after ten. It remains up to the billing authority to decide what rate of empty homes premium to impose, within these limits.

RF reckoned around 60 houses in the South Hams are permanently empty which would be affected. Another 200 or so houses temporarily vacant for instance as there was a sale going through would not be caught by this additional tax.

#### **The report was received.**

**1219/1 APOLOGIES** – Cllr Julian Brazil, County Councillor, Kingsbridge Division (JB); Cllr Peter Hales (PH).

#### **1219/2 MINUTES OF THE PREVIOUS MEETING HELD ON 21 NOVEMBER 2019**

The above minutes were AGREED as a true and correct record and were signed by the Chairman.

#### **1219/3 DECLARATIONS OF INTEREST**

Parish Councillors were invited to declare any unregistered or other interest, including the nature and extent of such interests they may have in any items to be considered at this meeting. **None were declared.**

#### **1219/4 CLERK'S REPORT**

**Pub and Asset of Community Value.** Recent work was done by PH on the issue including a short discussion paper and a report on his discussion with the Publican recently. **Resolved that the discussion on the application be carried over to the meeting in January.**

**WIFI.** This should be moved this week to its new home.

**Goal posts.** Peter Tanner came across on 8<sup>th</sup> December, looked at the site and did some minor maintenance work without charge. He repaired the arm and suggested

the use of plastic ties to secure the net to the goal post. Anything in addition would be charged for.

**The report was received.**

**1219/5 CHAIR'S REPORT**

**19<sup>th</sup> December 2019**

**Nice and brief for this evening – please and thank you.**

**Slapton Line.** I forwarded the email from Peter Chamberlain to you all on 2<sup>nd</sup> December. Sorry no further information is available on the movement of the War memorial. I have since tried phoning Peter without success.

**Strete Gate.** I have emailed Richard twice on the subject of steps to the beach but have not had any reply.

**Playpark.** This is in good condition but there are plenty of molehills. Although Peter Tanner has been to check the football goal it needs some cable ties to fix up the net. We are working on changing the contact information on the notice sign.

**Road to Snails Castle past Orestone.** I am sure Louise can enlighten us on progress. I'd like to thank everyone for their hard work throughout 2019 and I wish everyone a Merry Christmas and a Happy New Year.

**The Chair's report was received.**

**1219/6 PLANNING & PLANNING MATTERS**

The Clerk reported on enforcement matters. RF commented that SHDC now has more enforcement officers so planning breaches should be policed more effectively.

In addition, **Landcombe House [2859/19/HHO]** and **[2857/19/CLP]** was discussed and it was resolved the Clerk contact the planners to get an enforcement officer to visit on site and ensure activity was compliant.

*Since the meeting the owner of Landcombe House has emailed the council to update them on matters.*

We are still to write to SHDC to complain about Blindwells.

It was noted the owner of the Coach House Tallis Rock has contacted the Clerk to request he attend January committee. Five objections had been lodged on the planning portal at the meeting date mainly over concerns with access.

**1219/7 NEIGHBOURHOOD PLAN**

**NP Report for PC – December 2019**

With the Examiner's six-month suspension period ending on 10/12/2019 a meeting was held on 03/12/2019 to discuss and agree alternative word changes to Policies SNP8 and SNP9 in response to those suggested by Mr Dixon.

Discussions resulted in the following proposals.



## **Proposed Word Changes**

### **SNP8: HOUSING DEVELOPMENT SITE AT COX'S FARM FIELD**

4.11 The plan proposes that the development can be accessed from the A379 and The Plat. Subject to a suitable planning application being submitted, the Highway Authority and SHDC Conservation Office acknowledge that access to and from the A379 could be safely and satisfactorily delivered. The two access points are to be connected which will provide permeability, minimise trip lengths and maximise safety and access, particularly to the proposed village car park.

### **POLICY SNP8: HOUSING DEVELOPMENT SITE AT COX'S FARM FIELD**

Development is proposed at the site known as Cox's Farm Fields. The development shall include:

- A. 17 new homes, including at least 5 affordable homes subject to the principal residence restriction required under Policy SNP9, 8 open market homes **not** subject to the principal residence restriction required under Policy SNP9 and 4 open market homes restricted to the principal residence restriction required under Policy SNP9.
- B. Vehicular access from the A379 and The Plat, joined up to enable permeability;
- C. Footpath links between the A379, The Plat and Blackbird Wood.

Subject to demonstrating viability, the landowner or developer shall investigate providing a car park for up to 15 cars for use by the public and accessible from the A379.

The development shall conserve and enhance the Conservation Area and designated heritage assets.

The detailed development plan requires consultation with the local community.

### **SNP9: PRINCIPAL RESIDENCE REQUIREMENT**

4.15 It should be noted that this Policy will only apply to four of the homes for open market sale proposed under Policy SNP8. The Policy will apply to the 5 affordable homes also proposed under Policy SNP8.

### **POLICY SNP9: PRINCIPAL RESIDENCE REQUIREMENT**

- 1. New housing, excluding replacement dwellings or those managed by a registered social landlord, will only be supported where there is a restriction to ensure its occupancy as a principal residence.
- 2. This must be guaranteed through a planning condition or legal agreement.
- 3. A principal residence is defined as one occupied as the residents' sole or main residence, where the residents spend the majority of their time when not working away from home, and the condition or obligation on new market homes will require that they are occupied only as the principal residence of those persons entitled to occupy them.

Consultation feedback from the community identified second home ownership as the greatest sustainability concern within the parish of Strete if this was not restricted.

SG members decided to retain the current wording of Policy SNP9 as this will apply to all other developments that may arise in the village in the future.

The limited 2<sup>nd</sup> home policy restriction suggested for Cox's Farm Field site will provide Strete Village and Strete Estate with a more viable alternative to what would result from the application of Policy TTV 27 included in the Plymouth and South West Devon JLP.

If the proposed word changes are not accepted and Strete Estate intends to release the site for development in the future, there would be no alternative for the Neighbourhood Plan Steering Group but to request the Examiner to remove the Cox's Farm Field allocation from the Plan and return the settlement boundary to the edge of CFF settlement.

This would place the site outside the settlement boundary and any proposal for it would be considered against JLP Policy TTV 27. SHDC have been approached and have confirmed their support for the word changes.

The Examiner has released a public notice extending the suspension period to 31<sup>st</sup> January 2020. Depending on the response from Mr Dixon to the letter with proposed word changes and the consequences for SNP if they are not acceptable, the Examiner will then consult on the progress made and consider whether to recommence the examination of the plan. RC informed the meeting that Mr Dixon had contacted SHDC to request an extension to the suspension period to the end of April 2020 to allow consultation with the Toll Estate.

**The NP report was received.**

#### **1219/8 UPDATE ON THE SLAPTON LINE, PLACING OF THE WAR MEMORIAL & PROVISION OF EXTRA PARKING ALONG THE SLAPTON LINE**

RC asked on progress with the relocation of the War memorial to the Strete Gate carpark area. He asked if Peter Chamberlain been contacted on progress. It was advised there would be no further progress until mid-January. There would need to be an additional budget to maintain the monument which will be picked up when the precept is discussed later. RF referred to the discussion last month [1119/8] where IC had mentioned the possibility of keeping the monument in its present location with additional infrastructure works to protect it. RF thought this recommendation was not sound and mentioned another similar situation where works to stabilise and protect a structure in its coastal site had been unsuccessful.

#### **1219/9 UPDATE ON CONTRACTS**

**Greenspace.** The contractor was due to do works on rolling the road down at Prideaux Lane [Severns Cottages] after the 'road race' incident. The extra fee quoted



was £70 in addition to the contract and GC awaited confirmation that the work had been done. There was some discussion on ownership of the land around Prideaux lane and to consider the access needs of farmers who used the lane if traffic calming measures were deployed.

**This was noted.**

## **1219/10 COUNCILLORS' REPORTS**

**KG (Chair) Playpark.** This was covered in 1219/5. IC had met with Peter Tanner when he came to review the goal posts and suggested a diagonal at the back of the goal posts but Peter Tanner advised this could be a trip hazard.

**LN Transport and Roads.** John Gilbert is yet to come and cut the hedges. The road to Orestone/Snails Castle through Fuge is now very muddy where the two farms are and beyond up the hill. A discussion took place on who was responsible for clearing up dirt, waste and other mess on agricultural roads. It was suggested the farmer [Mark Wall] might like to clear the road of mud. LN asked if the sweeper had been down to clear the road. LN also observed the wall down to Strete Gate was being worked on, though a bit near Brockhall had been missed.

**DR Health and Safety.** DR confirmed the defibrillator is checked daily and a report made monthly online to the South Western Ambulance Service NHS Foundation Trust on its status. The old defibrillator had now been removed and its cabinet taken down. The Parish Hall committee had requested a contribution to the recent felling of trees around the Hall. IC commented that the Hall committee had not asked permission of the Council to fell the trees. It was felt that the council should not offer to contribute to the costs of the trees being cut down.

**Resolved: [unanimous] The Council would not offer to contribute to the cost of cutting down the trees around the Hall.**

### **IC Rights of Way, tree warden and Strete Gate.**

**Rights of way.** Some haven't been inspected since last time and one buddle hole needs to be drained.

**Tree warden.** Trees at Strete Gate had been cut down because of Ash Dieback but IC noted there was no sign of dieback in the trees that had been felled. He has put a reprieve on the trees that remain. SHDC had impeached the trees after a survey earlier in 2019. IC commented that the trees were responding to the drought conditions that pertained and were not diseased. Contractors maybe weren't knowledgeable and were cutting down well trees but RF observed that DCC was careful because of the risk of trees falling onto the highway.

**Strete Gate.** The Pay and Display sign has now been replaced.

**RC Planning and Neighbourhood Plan.** RC stated there was nothing to add. RF noted that Slapton PC had a prime residency requirement in their proposed Neighbourhood plan which applied to new build homes only.

The aim is to help maintain sustainable communities.

**PH The VAS sign and local transport liaison.** PH has taken the battery for the VAS home to charge it.

**GC Village Green.** GC noted there was nothing to add.

### **1219/11(a) FINANCE**

The Clerk supplied the meeting with a list of cheques for payment. One late cheque 1691 was added to the list on the agenda for the Christmas tree and decorations. This is permissible under s137 LGA 1972.

1689- Strete Parish Hall hire November £30.00	1690- Clerk salary December £249.00
1691 – Mr I Cumberlidge – Christmas tree and decorations £86.00.	

**It was proposed and AGREED by all present to authorise payments as enumerated above.**

### **1219/11(b) FINANCE**

A monitoring report for the year to December 2019 had been circulated already along with a cashflow projection. The latest projection of 2019/20 to the end of March 2020 gives CR 3,689.23. It was agreed the latest monitoring should be published on the noticeboards. **Resolved the Clerk would provide the monitoring statements for the boards and website.**

### **1219/11(c) FINANCE**

Cash at bank –. £7,056.33CR Current account at 08/12/19, £10,287.04CR Business Reserve account at 08/12/19.

### **1219/11 (d) FINANCE.**

**Precept.** The Clerk had previously circulated a draft precept and a range of Band D calculations to councillors for discussion. A brief discussion took place. A number of items were identified that would need to be provided for in 2020/21 over and above existing activities. These are: parish initiatives on becoming carbon neutral, maintenance of the War memorial once it is moved to its new location at Strete Gate by March 2020, new website accessibility requirements due by September 2020; maintenance of the buddle holes [£600 lodged toward this], stiles on Prideaux Lane to keep out unwanted vehicle traffic, and to put money back to reserves to cover some of the £4,000 transferred in March 2019. **Resolved: to set a precept of £13,000 up from £12,000 in 2019/20 to cover existing activities and the new obligations listed. This £13,000 represents an amount of £44.75 per council tax charge payer.**



## 1219/12 CORRESPONDENCE

Correspondence as listed on the agenda was noted

## 1219/13 REPORTS

Councillors were asked if there was anything else to add. All declined.

**1219/14 THE NEXT PARISH COUNCIL MEETING WILL BE HELD ON THURSDAY 16 JANUARY 2020 IN STRETE PARISH HALL AT 7.00 PM.**

**THE MEETING WAS CLOSED** at 9.05 p.m.

Signed: Cllr Kate Gill (Chair)

Dated: 16 JANUARY 2020

### ACTION POINTS:

**Clerk:** to update the contact details on the signs at the playpark; contact the planners to get an enforcement officer to visit on site at Landcombe and ensure activity was compliant; to provide the monitoring statements for the boards and website.

**KG:** to speak with RF on the matter of the steps down to the beach at Strete Gate.

**All:** the discussion on the Asset of Community Value application be carried over to the meeting in January.

---

Woodlands Dartmouth



---

## National Trust - Coleton Fishacre House & Gardens

Wed, 19 Feb, 14:00 – 16:00

Wild Wednesday comes to Coleton Fishacre during the school holidays. On these days, the ranger team lead 50 things to do before you're 11¾ activities in the garden.

coletonfishacre@nationaltrust.org.uk. Call 01803 842382.



## Health & Wellbeing Centre (HWBC) for Dartmouth

Work on the new Health & Wellbeing Centre (HWBC) for Dartmouth has been continuing behind the scenes. Hopefully some of you will have gone to the presentation at the Guildhall on December 6<sup>th</sup>. It will cost £4.7 million and be a two-storey building of 1,500sq meters housing the Dartmouth Medical Practice, Dartmouth Caring, all the clinics at present taking place at the Dartmouth Clinic and a pharmacy. Assuming that the planning application does not meet with opposition, the aim is to start building in October 2020 and for it to be complete and ready for occupation in the autumn of 2021.

There will be a new roundabout constructed on the main road roughly where the present turn off to Sainsburys is, giving access to the HWBC and it will have its own car park. There will be bus transport from the lower town which is currently being worked out between SHDC, DTC and the NHS Trust. It is also hoped that there will eventually be an improved bus service from Dartmouth to Torbay Hospital.

It is hoped that once the HWBC is finished and occupied then the DMP computing system can be linked in to the hospitals. This is not the case at present, which is why sometimes it can take so long to get back test/X-ray/scan results.

DMP is part of the local Primary Care Network, which covers an area of more than 30,000 patients, meaning that services and specialists can be shared and travelling minimised.

Dartmouth Medical Practice (DMP) is still finding that around 10% of doctor's appointments are not actually being taken up. No wonder it is hard to get to see a doctor quickly – please do phone up the surgery if for some reason you cannot attend an appointment you have booked.

Even if this is only on the day itself, it will still be possible for another patient to use your appointment who may need to see a doctor urgently.

One of the main reasons for these failings is lack of staff.



Efforts are being made to persuade school leavers that a good career path is available with the NHS – even if you start as a receptionist it is possible to get training to becoming a highly qualified nurse, or eventually even a doctor. As it seems so hard to recruit trained personnel to Dartmouth, then we need to try and persuade our young people who are already here to stay on in Dartmouth and work here, rather than move away.

DMP now has a GP Clinical Assistant (Lizzie) and a Nurse Associate (Kim) who have both been trained to take over some of the GPs' work load. Please do try to make use of them if the receptionist suggests they could help you. If they feel that you do actually need to see one of the doctors, then this can probably be arranged more quickly by them than if you insist on a GP appointment and there is not one available for several days.

DMP would like all patients to use the online services as much as possible – to book or cancel appointments, look up test results, etc. It is quicker for patients and saves time for the DMP staff. If you are not sure how to do this, then Emily Heard is available to give you help with learning how to access it all. Please contact the surgery for details. We still need intermediate care beds in Dartmouth, rather than having to travel to Totnes, Newton Abbot or even further afield to visit our friends and relatives who are not yet quite well enough to return home. The best way to achieve this is if people can write in with their story of the care they or their family have received. The same applies to the “care in the community” being provided at home, which is often not in fact adequate. The powers that be need to be told that sometimes, even often, their “models of care” are simply not working in practice and they need to do more to keep patients safe and cared for at home in order to free up the hospital beds so badly needed. The Torbay & South Devon NHS Foundation Trust (TSDFT) is currently running a survey for 3 months (or until 20 responses have been received) of patients' experiences of intermediate care after they leave Torbay Hospital, be that at home or in a local nursing/residential home.

Please share your experience by writing to [communications.tsdf@nhs.net](mailto:communications.tsdf@nhs.net). as this is the only way we can hope to achieve the extra beds we need – by telling them how it really is, not how their computer model thinks it is. *Thank you Liane for the update.*





# STRETE VILLAGE DAY

**YOUR  
HELP IS  
NEEDED**

Everyone is invited to  
the first Village Day  
planning meeting

**7.00PM**  
**4th March**  
at the  
**Parish Hall**

Your ideas and commitment to help will ensure  
we have another enjoyable and memorable  
Strete Village Day on Saturday 1st August 2020.





**South Hams**

## **Do you or someone you know struggle to pay energy bills?**

Citizens Advice South Hams is helping local residents to make significant savings on their energy bills. Clients have typically made energy cost savings of £200-£500 a year. In addition, South Hams residents have been supported to secure grants towards energy efficiency improvements in their homes. These energy savings help reduce the level of fuel poverty in such households.

This is vital work, as shocking new statistics from National Energy Action reveal that one in five private rented households in the UK are in fuel poverty. A household is considered to be in fuel poverty if 10% or more of the household income is spent on fuel – in short that’s money spent on heating, hot water and running appliances. Fuel poor households commonly face the difficult choice between eating and heating. Unknown to many, and often hidden amongst the beauty of Devon, local people are struggling to pay their energy bills. Nearly half of fuel poor households are in employment but still struggling.

Nick White, from Citizens Advice South Hams says, “Fuel poverty is caused by combinations of low incomes, high energy prices and energy inefficient housing. Our trained Energy Advisers can help people who are struggling to pay their energy bills or who are worried about heating their homes during the winter months.

“We have a home visiting service to advise on homes with - expensive heating systems, draught, damp and mould. Recently we helped a householder whose storage radiator was not wired properly. The landlord has fixed the problem and reimbursed the tenant by £700. In another case we helped a client who could not understand why he was paying over £2,000 a year in energy bills. We liaised with the energy company, identified an error and facilitated reimbursement totalling £985.”

**If you would like to talk to Citizens Advice South Hams energy efficiency team, call 01803-659733 or email [energy.advice@southhamscab.org.uk](mailto:energy.advice@southhamscab.org.uk).**





# Timber-Jack

4 Island View Thurlestone Kingsbridge TQ7 3NH

07866 696 307  
01548 560564

WWW.TIMBERJACK.CO.UK

E mail:  
info@timber-jack.co.uk  
A J Rhymes

## Landscaping & Fencing

We have experience in building and carrying out a wide variety of garden services and are able to design and build any style of fence to your personal requirements using the highest quality locally sourced timber products.

## Tree Services

All aspects of tree surgery from pruning to the removal of dead, dying and dangerous trees. Stump grinding Replanting Woodland management and maintainance. All of our work is carried out to BS:3998 standards by fully trained and qualified staff.

*Working today for tomorrow's countryside*

*Reflexology*

**GUINOT**  
INSTITUT • PARIS

*For health and relaxation*

**Hydradermie Facials**

*Manicures - Pedicures*

*Well qualified, over 20 years experience*

*For all enquiries and appointments, please contact*

**ANITA ENGLAND**

**01803 770947**

**Chris Ellis**  
**Quality Seasoned**  
**Barn Stored Logs**  
Tel: 01803 770264  
Mobile: 077727 90063





# PAUL BROWN

WINDOW CLEANING  
*GUTTER CLEANING*  
AND  
SOLAR PANELS

Phone 07718766799 or 01548 559337  
Email pauldbrown59@btinternet.com



## Keith Ellis & Son

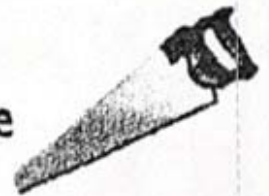
Working locally, with over 30 years experience  
Carpenter & Joiner

General Maintenance Including Painting & Decorating

Also undertaken: PVC Fascia Boards & Guttering, Doors & Windows ect  
Kitchens, Bathrooms Including Tiling

**Tel: (01803) 770264**

Start Bay Park, Strete



# Timber-Jack

4 Island View Thurlestone Kingsbridge TQ7 3NH

07866 696 307  
01548 560564

WWW.TIMBERJACK.CO.UK  
E mail:  
info@timber-jack.co.uk

## Chimney Sweeping

We are committed to providing a thoroughly professional service towards all aspects of chimney care. Our qualified staff will treat your home like their own and ensure that you are totally satisfied with all aspects of our visit.

Rayburn & Multifuel burners  
Inglenook fire places  
Traditional chimneys  
Advice on getting the best from your burner

AGA flues  
Twin & flexi lined systems  
Smoke draw test  
Chimney Certificates Issued



Pol No:5500 26209



Reg No: 0784



## Stretewise - Events

**The Kings Arms Strete:** The Kings Arms is closed until early/mid-February while they complete upgrading and renovation work. It looks almost certain that Charlie Deuchar (of Bayards Cove) and Andy Edwards (who lives in Strete) will be taking over as the management team of the pub at around that time.

Mark and Kat said “We'd like to thank those lovely people that have supported us over the last two years. Kat and I have enjoyed running the Kings Arms, made some great friends but will still be around and we wish Andy and Charlie and their families the very best in their venture”

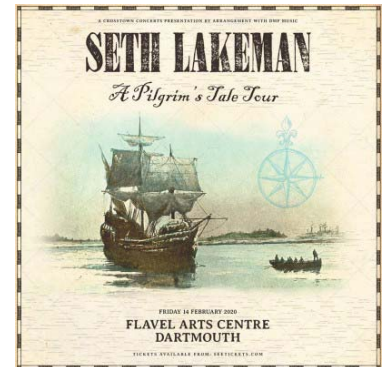


---

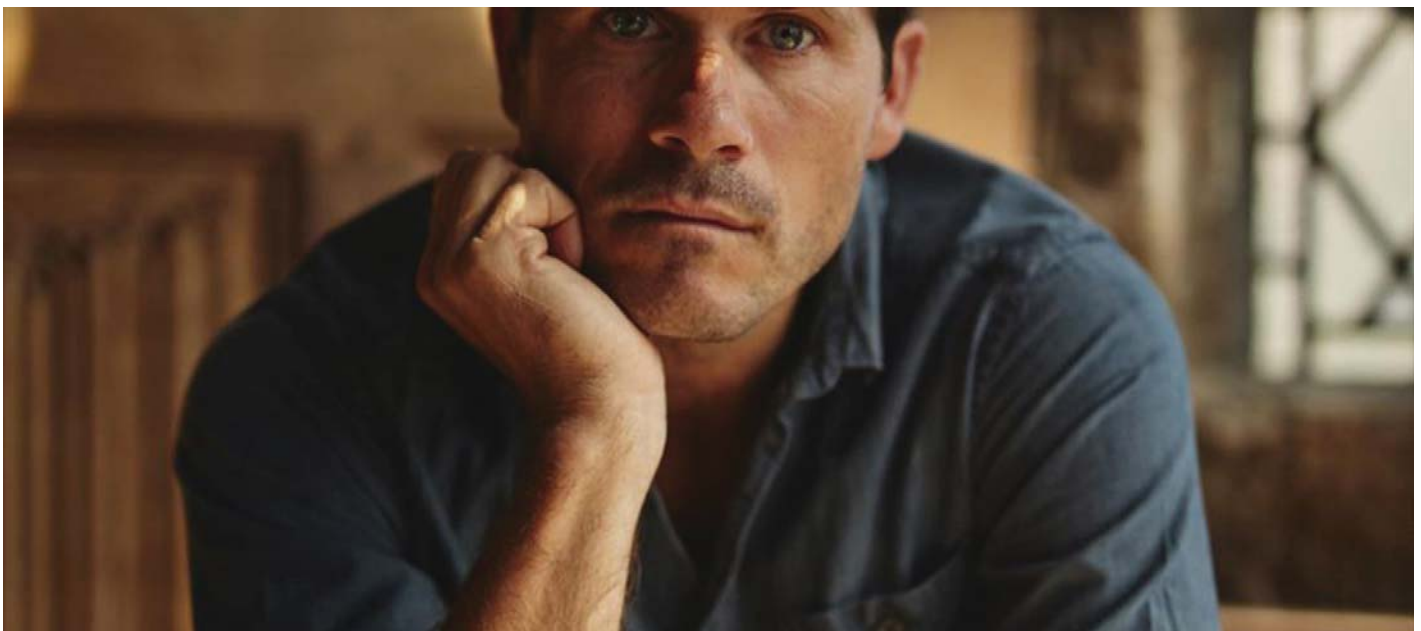
## 'A Pilgrim's Tale' Seth Lakeman

**Flavel Theatre Dartmouth February 14th**

2020 marks the 400th anniversary of the historic Mayflower voyage. Multi award-winning folk singer Seth Lakeman was raised and still lives on Dartmoor, within sight of the sea at Plymouth, from where the Puritans sailed on the Mayflower in 1620. Seth tells the epic and soulful tale of the Pilgrim Fathers on his new album 'A Pilgrim's' and will be playing songs from the album live with his band in the towns and cities that the Pilgrim Fathers came from.



The album features contributions from bass player Ben Nichols, Seth's sister-in-law Cara Dillon, dad Geoff Lakeman, folk musician Benji Kirkpatrick and is narrated by actor Paul McGann.





## Stretewise - Events

**The Tap House:** Stokeley Farm. All new home for the South Hams Brewery, hosting regular Live Music and foody events on the first Saturday of every month. <http://www.stokeleyfarmshop.co.uk/events.htm>



**TAP HOUSE**

**Tap House...**

Live music and foodie nights on the first Saturday of every month, and the perfect place for your private party.

So, if you're looking for a venue that has plenty of space for good times, and comes with its own quality ales on tap, then give us a call on **01548 581151** to find out more.

**SATURDAY 4TH JANUARY**  
Plymouth's Blues legend Russell Sinclair.

**SATURDAY 1ST FEBRUARY**  
The return of the ever popular Becky Brine.

**SATURDAY 7TH MARCH**  
Kingsbridge's Ben Carr and his bluesy sounds.

**SATURDAY 4TH APRIL**  
Fly Yeti Fly. Harmony and feel good vibes.

**SATURDAY 2ND MAY**  
Swinging good times from The Travelling Gooseberries.

**SATURDAY 6TH JUNE**  
A debut appearance at the Tap House for Ross Kelly.

**SATURDAY NIGHT LIVE AT THE TAP HOUSE.**

**South Hams Brewery**



*Becky*

*Ben Carr*

*Fly Yeti Fly*

## West of England Brass Band Championships

Riviera International Centre, Chestnut Avenue,  
Torquay, Devon, TQ2 5LZ

Band Championships of Great Britain will take place over the weekend of the 14th - 15th March 2020, with the qualifiers representing our region at the National Finals later in the year. For more information visit: [www.webba.org.uk](http://www.webba.org.uk)





## Strete-wise - Pam's Corner

### Continuing my memories of Strete 1930's

Starting at the Laughing Monk which used to be the village school. Where the parking area is, there was a building which was the infants room where we spent the first couple of years and then you would move into the other room, (it was the restaurant of the Laughing Monk) The Infants play area was between the road and the infants room, there was a wall and small gate between the play area and the road to keep us safe. The seniors would go out of the top door, next to the church ground, and cross the road to the bank opposite, walk up the bank to the top playground, (now the church carpark).



In the church burial ground next to the Laughing Monk close to the road there is a 19 year old girl buried whose christian name is Rose, when the RAF was stationed here during the war and had to pass the church at night they would say "goodnight Rosie." One night one of them said goodnight he got a reply frightening him, no one owned up to being the joker and some of the boys believed it was Rosie who answered!!

© Derek Harper - [geograph.org.uk/p/4161119](http://geograph.org.uk/p/4161119)

Next to the church is Hynetown House which was a guest house with a tennis court where the houses are now with gardens and fruit trees behind it. Of course none of the three houses are there now. Next was Prideaux Lane and then no houses until you got to the Mewstone (Andrea and Malcolm Hollis house), just fields. No more buildings until the bungalow at Holmer Park. Now we will turn around and come back on the other side of the road, fields all the way down to the top of Church Hill, turn right into Hynetown Road. On the right was all fields no buildings at all. The first was The Crest and next the bungalow "Falodine", then Waypark Lane which led down to the allotments, (there was only one being used and the rest my Grandfather rented to grow corn and straw for his horse,) which was in the field where Waypark house is now and then to fields. Turn around at the bottom of Hynetown road and come back the opposite side, on the corner was Mirante, now known as The Old Vicarage. Where the electric substation is was the gate that led into a field where The Ark, a wooden bungalow was.



© Derek Harper - [geograph.org.uk/](http://geograph.org.uk/)

Next was Closebye, the house in front was a double garage with a flat over the top. The wood was a grazing field, in the corner is Morely. Carry on around the "S" bend and up to the top corner opposite the Crest where there was a bungalow which was locally known as "Ours Back Door", (can't remember why, I think it was because trades people had to use the little gate!!) Next was Blindwells, followed by fields to the now Church carpark. If we go to the pub carpark and turn right towards Kingsbridge on the right are the two Asherne Cottages, (I live in one), opposite is the Lodge and Asherne drive. Next to cottages where the Blossoms was used to be a tennis court belonging to Strete Lodge with trees 8-10ft high so no one could look in to see them playing tennis etc, in the winter time my mother had to have the Tilly lamp on all day so she could see to cook etc no electricity! Then Strete Lodge and then the Mews which was stables with living quarters over the top for staff. The stables were turned into a garage, and that's it to Mirante.

I hope you have enjoyed walking around Strete in the 1930's with me. If you are interested in reading about Strete in earlier days I would suggest getting "Extracts from Strete past and present" Marion F Smithes 1933, which you can get from our Post Office or from me as I hold BASH books regarding Strete history. **Pam**

## A BIG THANK YOU FROM PAM

A big thank you to all the kind people who have "looked after" me, brought me food and did my shopping and to Joan for doing my washing, ironing and bringing it to the hospital for me, when Melanie was away. Special thanks to my next door neighbour, Mike for all his help, making sure I got up and down the stairs without falling! and all the other little jobs he did for me also to Melanie for driving me around not only since I broke my hip but taking me to Torbay every month to the eye clinic. THANK YOU ALL also for all the cards and messages. Not forgetting the kind man who helped me up when I fell and the lady and gent who turned their car and came back to make sure I was OK thank you. **Pam**



## VINYASA FLOW YOGA

**COME AND TAKE AN HOUR TO FOCUS SOLELY ON YOU!  
WE WILL FLOW THROUGH A DYNAMIC PRACTICE,  
CONNECTING OUR MOVEMENT WITH THE BREATH,  
BEFORE ENDING THE PRACTICE WITH A YUMMY  
SAVASANA FOR TOTAL RELAXATION!**

**STRETE VILLAGE HALL  
EVERY TUESDAY 6.45PM - 7.45PM**

**£7 PER DROP IN OR £25 TO BOOK A BLOCK OF 5  
ALL LEVELS VERY WELCOME!**

**CONTACT ME AT [LEANNE.ROBERTS.YOGA@GMAIL.COM](mailto:LEANNE.ROBERTS.YOGA@GMAIL.COM)**

**OR 07850 6711 83**

**TO BOOK YOUR PLACE**

**[WWW.LEANNEROBERTSYOGA.CO.UK](http://WWW.LEANNEROBERTSYOGA.CO.UK)**





## Stretewise Recipe

### Pork and Parsnip Cobbler

#### The ingredients:

2 tablespoon vegetable or olive oil.  
700 gram pork shoulder, cut into 3cm pieces.  
12 small pickling onion.  
2 tablespoon plain flour.  
3/4 cup white wine  
3 cloves garlic, finely chopped  
2 teaspoon fennel seeds  
2 large chicken stock cubes  
825 gram can apricot halves, drained



#### Method:

Heat oil in a 2.5-litre (10-cup) flameproof ovenproof dish over moderately high heat. Cook pork, in batches, for 5 minutes or until browned.

Transfer to a heatproof plate.

Add onions to dish; cook and stir for 3 minutes or until browned. Return pork to dish. Sprinkle flour into dish; cook and stir for 1 minute or until combined.

Add wine, garlic, fennel seeds and crumbled stock cubes. Place half the apricots in a food processor and process until smooth. Add to pan with 2 cups water.

Bring to the boil. Reduce heat; cover. Simmer for 1 hour. Add parsnip; simmer, covered, for 25 minutes more or until vegetables and pork are tender

Stir in remaining apricots.

Meanwhile, preheat oven to 200°C/180°C fan forced. Place flour in a bowl.

Rub in butter to make fine crumbs. Stir in thyme. Make a well at centre.

Whisk milk and 1 of the eggs in a jug; add to flour mixture. Using a round-bladed knife and a cutting motion, mix until just combined. Turn dough out onto a lightly floured surface. Knead until smooth. Press into a disc, about 2cm thick. Using a 5cm round cookie cutter, cut 12 discs from dough.

Arrange dumplings over pork mixture. Brush tops with remaining whisked egg.

Bake, uncovered, for 25 minutes or until dumplings are golden and cooked.

Remove from oven. Stand for 5 minutes.

## Stretewise Recipe

### Spaghetti Puttanesca with Red Beans & Spinach

#### The ingredients:

100g wholemeal spaghetti  
1 large onion finely chopped  
1 tbsp rapeseed oil  
1 red chilli, deseeded and sliced  
2 garlic cloves, chopped  
200g cherry tomatoes, halved  
2 tsp cider vinegar  
1 tbsp capers  
5 Black olives, halved  
1 tsp smoked paprika  
210g can kidney beans (drained)  
160g spinach leaves  
handful of chopped parsley  
handful of basil leaves



#### Method:

Cook the spaghetti in simmering water for 10-12 mins until al dente.

Hold back the pasta water to wilt the spinach later.

Meanwhile, fry the onion in the oil in a large non-stick frying pan with until tender and turning golden. Stir in the chilli, garlic and cherry tomatoes.

Add the vinegar, capers, olives and paprika with a ladleful of pasta water.

Stir in the beans and cook until warmed through.

Add the spinach to the pasta water to wilt, then drain well.

Toss with the tomato and bean mixture and the parsley and basil, then pile onto plates or in shallow bowls to serve.

---

## Charity Beer Festival - The Flavel, Dartmouth

Friday 21 February, 6.00pm -11.00pm

Saturday 22 February, 12.00pm -11.00pm

The annual Charity Beer Festival brought to you by DARTMOUTH ROTARY and raising money for DARTMOUTH CARING. Artisan, micro and major breweries are represented by a fantastic riot of flavour and strength ales accompanied by local and lovingly produced ciders.





# Stretewise Crossword - Answers

**Across** 1: Cuckoo 3: Spring 9: Adder 10: Boycott 11: Hunt 13: Nears 15: Rant  
 16: Hinge 20: Repel 23: Hindi 24: Toaster 25: Rumba 27: Summer 28: Trades  
**Down** 1: Carbon 2: Chrysanthemum 4: Prawn 5: Inde 6: Garret 7: Boss  
 8: Ethnicity 12: Tree 18: Great 19: Cyprus 21: Patted 22: Ladies 26. Apes

## School Autumn Term:

**Half term:** Monday 17 February to Friday 21 February 2020

**Ends:** Friday 27 March 2020

**Easter Holiday:** Monday 30 March to Monday 13 April 2020

**Summer Term : Starts:** 14 April 2020

**Half term:** Monday 25 May to Friday 29 May 2020

**Ends:** Thursday 23 July 2020

DARTMOUTH - PLYMOUTH Via Kingsbridge STAGECOACH No3

STRETE, Kings Arms Car Park. Monday - Saturday (Except Public Holidays)

0637 (NS) 0752 (SSH) 0952 1052 1152 1252 1352 1452(SSH) 1554(SSH) 1737

Sunday and Public Holidays: 0937 1507

PLYMOUTH - DARTMOUTH Via Kingsbridge STAGECOACH No3

STRETE, Kings Arms Car Park. Monday - Saturday (Except Public Holidays)

0822(S) 0926(SSH) 1056 1156 1256 1356 1456 1609 1614(SD & S) 1711 1811 1911

Sunday and Public Holidays: 1348 1828

## Dartmouth Park and Ride

**Buses start on 23 March 2019 and will run until 31<sup>st</sup> October 2019.**

Long Stay (11 Hours)	Charging Period	Up to:	Price
Park and Ride TQ6 9LW	All week 8.00 a.m. to 7.00 p.m. Cars and motorcycles	All day (Low Season - when	FREE
		All day (High Season - when	£5.00
		2.00 p.m. to 7.00 p.m. (Low	FREE
		2.00 p.m. to 7.00 p.m. (High	£3.00
	Coaches	All day (Low Season)	FREE
		All day (High Season)	£7.00

If you return from the town after the normal operating hours you will be able to use the First bus service 90 from Dartmouth. It does not stop in the car park stop. It stops at a bus stop a very short distance away in the main road.

To advise of need to empty paper or bottle bank

**BOTTLE BANK: 01803 861 199**

Or contact on line:

<https://www.southhams.gov.uk/article/5781/Full-Bottle-Bank>

**PAPER BANK: 01803 861 234**

### **TOTNES & DARTMOUTH RING AND RIDE**

Phone between 10:00am and 12:00 midday

01803 867 878



In the **Strete Post Office and Store:**

Pay in Telephone, electric, water rates, foreign currency and postal services round the world.

If you bank with an English Bank such as:

NatWest, Lloyds TSB, Barclays, Alliance and Leicester, the COOP, Cahoot or Smile, you can deposit and pay cheques.

Withdrawals or deposit of cash can be made via your card (and PIN number).

**All contributions to the magazine are welcome:**

Recipes, Crosswords (not cryptic) articles,

letters, but the editor reserves the right as to whether to include, edit or adjust the content. Contributions should be sent to [stretewise@outlook.com](mailto:stretewise@outlook.com) or hard copies of contributions can be left at the to the Post Office.

**Copy deadline for Next issue 23rd March 2020**

**The April/May Magazine will be available from the Strete Village Store and ready for distribution on the 1st April.**

Stretewise is either £1 per copy purchased from the shop or £4.00 for a yearly subscription of six issues. To subscribe for 2020, send £4 to the editor, Stretewise, Strete TQ6 0RY, pay your distributor or pay at the Strete Post Office and Stores. Please provide your name, address.

**Stretewise Advertising:** contact [stretewise@outlook.com](mailto:stretewise@outlook.com)

or Dave Jones 01803 770059. Advertising rates 2020, (Rates held for another year) Plus inclusion on the [www.stretewise.co.uk](http://www.stretewise.co.uk) website.

For six bi-monthly advertisements for the year 2020. £6.66 per magazine for a half page ad. A5 full page £150, Half Page £40 and One Third of a page colour £25.



**fresh**  
DENTAL HEALTH CARE

**NHS and Private Appointments  
Available Now**



**Tel: 01803 835476**

**[www.freshdentalhealthcare.co.uk](http://www.freshdentalhealthcare.co.uk)  
[reception@freshdentalhealthcare.co.uk](mailto:reception@freshdentalhealthcare.co.uk)**

**3 Collingwood Road,  
Townstal, Dartmouth, TQ6 9JY**